

# **Anti-Estrogen Receptor (Clone: SP1)**

Rabbit monoclonal antibody  
Reference: AP10001; AP1001C



1 of 2

## **INTENDED USE AND PRESENTATION:**

For *in vitro* diagnostic use.

**AP10001, 7 mL.** Prediluted antibodies in a synthetic organic linear polymer buffer solution (pH 7.4), with carrier protein and preservative for stabilisation "READY TO USE"

**AP1001C, 1 mL.** Concentrated antibodies with carrier protein and preservative for stabilisation.

## **SUMMARY, EXPLANATION AND LIMITATIONS:**

Recognizes a protein of 67kDa, which is identified as estrogen receptor (ER) alpha. The ER gene consists of more than 140kb of genomic DNA divided into 8 exons, being translated into a protein with six functionally discrete domains, labeled A through F.

This antibody strongly stains the nucleus of epithelial cells in breast carcinomas. The ER is an important regulator of growth and differentiation in the mammary gland. Presence of ER in breast tumors indicates an increased likelihood of response to anti-estrogen (e.g. tamoxifen) therapy.

The immunohistochemistry (IHC) is a complex technique in which immunological and histological detection methods are combined. In general, the manipulation and processing of tissues before immunostaining, especially different types of tissue fixation and embedding, as well as the nature of the tissues themselves may cause inconsistent results (Nadji and Morales, 1983). Endogenous pseudoperoxidase and peroxidase activity or endogenous biotin and alkaline phosphatase activity can cause non-specific staining results depending on the detection system used. Tissues that contain Hepatitis B surface antigen (HBsAg) can produce false positives when using HRP detection systems (Omata et al, 1980). Insufficient contrast staining and/or improper mounting of the sample may influence the interpretation of results.

**Isotype:** IgG

**Immunogen:** Synthetic peptide derived from C-terminal of human estrogen receptor.

**Staining pattern:** Nuclear.

The interpretation of the stain results is the full responsibility of the user. Any experimental result must be confirmed by a medically established diagnostic product or procedure.

**Positive control:** Tissue sample breast carcinoma.

**External negative control:** Tissue sample homologous to the test sample incubated with an antibody isotype not specific for ER.

## **APPLICATIONS:**

This antibody is designed for the specific localization of human ER using IHC techniques in formalin-fixed, paraffin-embedded tissue sections.

The antibody identify ER in normal or neoplastic cells and reacts positively with secretory epithelial cells of the mammary gland and endometrial lining of the uterus, as well as benign and malignant tumors dependents.

## **PRODUCT COMPOSITION:**

Rabbit immunoglobulin IgG, clone SP1, obtained from culture supernatant. The preparation contains saline buffer, stabilising and carriers proteins, and sodium azide as a preservative.

## **METHODS AND PROCEDURE:**

**Principles of the procedure:** The demonstrations of antigens by IHC is a sequential procedure with several steps involving first the application of a specific antibody for the antigen of interest (primary antibody), then a secondary antibody which joins to the first, an enzyme complex, and the addition of a chromogenic substrate. The sample is washed between each step. Enzymatic activation of the chromogenic substrate creates a visible product where the antigen is located. The results are interpreted using a light microscope. The primary antibody can be used both in manual IHC and with automated immunostainers.

**Specimen:** Paraffin-embedded tissue samples should be used. Western blot techniques are not recommended.

**Staining procedure:**

<b>Antigen retrieval</b>	HIER Citrate Buffer pH 6.5
<b>Working dilution</b> (only for concentrates)	1:50 – 1:200
<b>Incubation</b>	30 min; RT
<b>Control Tissue</b>	Breast carcinoma

## **Amplification and development of the immunostaining:**

Follow standard procedure and the recommendations given by the manufacturer for the materials used. In the case of using automated immunostainers, use the specified buffers and materials for each instrument.

See our web site at [www.gennova-europe.com](http://www.gennova-europe.com) for detailed protocols ancillary reagents and support products.

## **REQUIRED MATERIALS BUT NOT SUPPLIED:**

All reagents, materials, and laboratory equipment for IHC procedures are not provided with this antibody. This includes adhesive slides and cover slips, positive and negative control tissues, Xylene or adequate substitute, ethanol, distilled H<sub>2</sub>O, heat pretreatment equipment (pressure cooker, steamer, microwave), pipettes, Coplin jars, glass jars, moist chamber, histological baths, negative control reagents, counter-staining solution, mounting materials, and microscope. Buffered solutions for antigen retrieval, enzyme treatments, highly sensitive detection systems, and other auxiliary reagents are available from Gennova Scientific.

## **STORAGE AND STABILITY:**

Store at 2-8 °C until the expiration date printed on product label. Do not use after the expiration date. If fresh solutions are required, these must be prepared immediately prior to use, and will be stable for at least one day at room temperature (20-25°C). Unused portion of antibody preparation should be discarded after one day. If the product is stored under different conditions from those stipulated in these technical indications, the new conditions must be



Catalog number



Batch code



In Vitro diagnostic medical device



Temperature limitation



Expiration date



Manufacturer



See instruction for use



**Gennova Scientific, S.L.**  
C/ Johann Gutenberg, 4F. Pol. Ind.  
El Canamo I • 41300 San Jose  
de La Rinconada • Sevilla, SPAIN  
Telefono: +34 954 150767  
Fax: +34 955 266494

[info@gennovalab.com](mailto:info@gennovalab.com)  
[www.gennova-europe.com](http://www.gennova-europe.com)

# **Anti-Estrogen Receptor (Clone: SP1)**

Rabbit monoclonal antibody

Reference: AP10001; AP10001C



2 of 2

verified by the user. The validity period of the ready to use products when opened, is the same as the expiration date indicated on the label of intact product.

Gennova Scientific guarantees that the product will maintain all of the described characteristics from the production date until the expiration date, as long as the product is stored and used as recommended. No other guarantees are provided. Under no circumstances is Gennova Scientific obliged to cover damages caused by use of this reagent.

## **TROUBLESHOOTING:**

If unusual staining is observed or any other deviations from the expected results, please read these instructions carefully, along with the instructions from the detection system. If this does not solve the problem, please contact Gennova Scientific's technical support department or your local distributor.

## **PRECAUTIONS:**

Use only by qualified personnel.

Use proper protective equipment in order to avoid contact with reagents and samples in the eyes, skin, and mucosal tissues. In case of contact with sensitive areas, immediately flush the affected area with water. Avoid microbial contamination of the reagent, as this may produce nonspecific staining results. This antibody contains sodium azide (NaN<sub>3</sub>), used as a stabilising agent, which is not considered to be a hazardous material in the concentration used. Concentration of sodium azide in drainage pipes made of lead or copper can cause the formation of highly explosive metallic azides. In order to avoid this, sodium azide must be disposed of along with a large volume of running water. Material safety data sheet (MSDS) for pure sodium azide is available upon request.

## **PERFORMANCE CHARACTERISTICS:**

Gennova Scientific has performed studies to evaluate the functioning of these antibodies for use with standard detection systems, concluding that the product is both specific and sensitive for the antigen of interest.

## **BIBLIOGRAPHY:**

Mason BH, Holdaway IM, Mullins PR, Yee LH, Kay RG: Progesterone and estrogen receptors as prognostic variables in breast cancer. *Cancer Res.* 1983; 43:2985-90.

Shintaku P and Said J W. Detection of estrogen receptors with monoclonal antibodies in routinely processed formalin-fixed paraffin sections of breast carcinoma. *Am J Clin Pathol.* 1987; 87: 161-167.

Snead DR, Bell JA, Dixon AR, Nicholson RI, Elston CW, Blamey RW, Ellis IO: Methodology of immunohistological detection of oestrogen receptor in human breast carcinoma in formalin-fixed, paraffin-embedded tissue: a comparison with frozen section methodology. *Histopathology.* 1993; 23:233-8.

Bevitt DJ, Milton ID, Piggot N, Henry L, Carter MJ, Toms GL, Lennard TW, Westley B, Angus B, Horne CH: New monoclonal antibodies to oestrogen and progesterone receptors effective for paraffin section immunohistochemistry. *J Pathol.* 1997; 183:228-32.

Harvey JM, Clark GM, Osborne CK, Allred DC: Estrogen receptor status by immunohistochemistry is superior to the ligand-binding assay for predicting response to adjuvant endocrine therapy in breast cancer. *J Clin Oncol.* 1999; 17:1474-81.

Zafrani B, Aubriot MH, Mouret E, De Cremoux P, De Rycke Y, Nicolas A, Boudou E, Vincent-Salomon A, Magdelenat H, Sastre-Garau X: High sensitivity and specificity of immunohistochemistry for the detection of hormone receptors in breast carcinoma: comparison with biochemical determination in a prospective study of 793 cases. *Histopathology.* 2000; 37:536-45.

Pavao M, Traish AM: Estrogen receptor antibodies: specificity and utility in detection, localization and analyses of estrogen receptor alpha and beta. *Steroids.* 2001; 66:1-16.

Dabbs DJ, Landreneau RJ, Liu Y, Raab SS, Maley RH, Tung MY, Silverman JF: Detection of estrogen receptor by immunohistochemistry in pulmonary adenocarcinoma. *Ann Thorac Surg.* 2002; 73:403-5.

Nash JW, Morrison C, Frankel WL: The utility of estrogen receptor and progesterone receptor immunohistochemistry in the distinction of metastatic breast carcinoma from other tumors in the liver. *Arch Pathol Lab Med.* 2003; 127:1591-5.

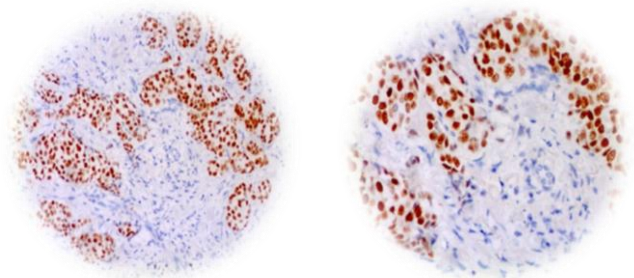
Cocquyt VF, Schelfhout VR, Blondeel PN, Depypere HT, Daems KK, Serreyn RF, Praet MM, Van Belle SJ: The role of biological markers as predictors of response to preoperative chemotherapy in large primary breast cancer. *Med Oncol.* 2003; 20:221-31.

Uchikawa J, Shiozawa T, Shih HC, Miyamoto T, Feng YZ, Kashima H, Oka K, Konishi I: Expression of steroid receptor coactivators and corepressors in human endometrial hyperplasia and carcinoma with relevance to steroid receptors and Ki-67 expression. *Cancer.* 2003; 98:2207-13.

Cano G, Milanezi F, Leitao D, Ricardo S, Brito MJ, Schmitt FC: Estimation of hormone receptor status in fine-needle aspirates and paraffin-embedded sections from breast cancer using the novel rabbit monoclonal antibodies SP1 and SP2. *Diagn Cytopathol.* 2003; 29:207-11.

Nadji M, Morales AR: Immunoperoxidase, part 1: the techniques and its pitfall. *Lab Med* 1983; 14:767-770.

Omata M, Liew CT, Ashcavai M, Peters RI: Nonimmunologic binding of horseradish peroxidase to hepatitis B surface antigen. A possible source of error in immunohistochemistry. *Am J Clin Pathol.* May, 1980; 73(5):626-632.



10 ×

20 ×

IHC of Estrogen Receptor (clone SP1) on FFPE breast carcinoma tissue.

Citrate pH 6.5; DAB; Hematoxylin

F01IT04\_V3R0612\_AP10001\_English



Catalog number



Batch code



In Vitro diagnostic medical device



Temperature limitation



Expiration date



Manufacturer



See instruction for use



**Gennova Scientific, S.L.**  
C/ Johann Gutenberg, 4F. Pol. Ind.  
El Cañamo I • 41300 San José  
de La Rinconada • Sevilla, SPAIN  
Teléfono: +34 954 150767  
Fax: +34 955 266494

[info@gennovalab.com](mailto:info@gennovalab.com)  
[www.gennova-europe.com](http://www.gennova-europe.com)