

Anti-Hepatocyte Specific Antigen (Clone: OCH1E5)

Mouse monoclonal antibody
Reference: AP10028; AP10028C



1 of 2

INTENDED USE AND PRESENTATION:

For *in vitro* diagnostic use.

AP10028, 7 mL. Prediluted antibodies in a synthetic organic linear polymer buffer solution (pH 7.4), with carrier protein and preservative for stabilisation "READY TO USE"

AP10028C, 1 mL. Concentrated antibodies with carrier protein and preservative for stabilisation.

SUMMARY, EXPLANATION AND LIMITATIONS:

Hepatocyte Specific Antigen, also called Hepatocyte Paraffin 1 or Hep Par 1, localizes to the mitochondria of hepatocytes. It is a sensitive marker for diagnosing hepatocellular carcinomas (HCC) in humans and dogs and distinguishing them from metastatic carcinomas and cholangiocarcinomas. Strong expression of the Hepatocyte Specific Antigen correlates with smaller tumors and longer patient survival. HCCs occur primarily in the stomach, but they are also found in many other organs. The Hepatocyte Specific Antigen may also be a useful marker for intestinal metaplasia. A very small percentage of HCCs do not contain the Hepatocyte Specific Antigen, and this may be associated with an alternative mechanism of hepatocarcinogenesis in its early stages.

To a lesser extent, the Hepatocyte Specific Antigen is also found in gastric carcinomas as well as a few other nonhepatic tumors.

The immunohistochemistry (IHC) is a complex technique in which immunological and histological detection methods are combined. In general, the manipulation and processing of tissues before immunostaining, especially different types of tissue fixation and embedding, as well as the nature of the tissues themselves may cause inconsistent results (Nadji and Morales, 1983). Endogenous pseudoperoxidase and peroxidase activity or endogenous biotin and alkaline phosphatase activity can cause non-specific staining results depending on the detection system used. Tissues that contain Hepatitis B surface antigen (HBsAg) can produce false positives when using HRP detection systems (Omata et al, 1980). Insufficient contrast staining and/or improper mounting of the sample may influence the interpretation of results.

Isotype: IgG1

Immunogen: Formalin fixed failed human allograft liver that was mechanically disrupted.

Staining pattern: Cytoplasmic.

The interpretation of the stain results is the full responsibility of the user. Any experimental result must be confirmed by a medically established diagnostic product or procedure.

Positive control: Tissue sample from liver carcinoma.

External negative control: Tissue sample homologous to the test sample incubated with an antibody isotype not specific for Hepatocyte Specific Antigen.

APPLICATIONS:

This antibody is designed for the specific localization of human Hepatocyte Specific Antigen using IHC techniques in formalin-fixed, paraffin-embedded tissue sections.

PRODUCT COMPOSITION:

Mouse immunoglobulin IgG1, clone OCH1E5, obtained from culture supernatant. The preparation contains saline buffer, stabilising and carriers proteins, and sodium azide as a preservative.

METHODS AND PROCEDURE:

Principles of the procedure: The demonstrations of antigens by IHC is a sequential procedure with several steps involving first the application of a specific antibody for the antigen of interest (primary antibody), then a secondary antibody which joins to the first, an enzyme complex, and the addition of a chromogenic substrate. The sample is washed between each step. Enzymatic activation of the chromogenic substrate creates a visible product where the antigen is located. The results are interpreted using a light microscope. The primary antibody can be used both in manual IHC and with automated immunostainers.

Specimen: Paraffin-embedded tissue samples should be used. Western blot techniques are not recommended.

Staining procedure:

Antigen retrieval	HIER Citrate Buffer pH 6.5
Working dilution (only for concentrates)	1:25 – 1:100
Incubation	30 min; RT
Control Tissue	Liver carcinoma

Amplification and development of the immunostaining:

Follow standard procedure and the recommendations given by the manufacturer for the materials used. In the case of using automated immunostainers, use the specified buffers and materials for each instrument.

See our web site at www.gennova-europe.com for detailed protocols ancillary reagents and support products.

REQUIRED MATERIALS BUT NOT SUPPLIED:

All reagents, materials, and laboratory equipment for IHC procedures are not provided with this antibody. This includes adhesive slides and cover slips, positive and negative control tissues, Xylene or adequate substitute, ethanol, distilled H₂O, heat pretreatment equipment (pressure cooker, steamer, microwave), pipettes, Coplin jars, glass jars, moist chamber, histological baths, negative control reagents, counter-staining solution, mounting materials, and microscope. Buffered solutions for antigen retrieval, enzyme treatments, highly sensitive detection systems, and other auxiliary reagents are available from Gennova Scientific.

STORAGE AND STABILITY:

Store at 2-8 °C until the expiration date printed on product label. Do not use after the expiration date. If fresh solutions are required, these must be prepared immediately prior to use, and will be stable for at least one day at room temperature (20-25°C). Unused portion of antibody preparation should be discarded after one day. If the product is stored under different conditions from those stipulated in these technical indications, the new conditions must be

REF Catalog number

LOT Batch code

IVD In Vitro diagnostic medical device

Temperature limitation

Expiration date

Manufacturer

See instruction for use



Gennova Scientific, S.L.
C/ Johann Gutenberg, 4F. Pol. Ind.
El Cafamo I • 41300 San Jose
de La Rinconada • Sevilla, SPAIN
Telefono: +34 954 150767
Fax: +34 955 266494

info@gennovalab.com
www.gennova-europe.com

Anti-Hepatocyte Specific Antigen (Clone: OCH1E5)

Mouse monoclonal antibody
Reference: AP10028; AP10028C



2 of 2

verified by the user.

Gennova Scientific guarantees that the product will maintain all of the described characteristics from the production date until the expiration date, as long as the product is stored and used as recommended. No other guarantees are provided. Under no circumstances is Gennova Scientific obliged to cover damages caused by use of this reagent.

TROUBLESHOOTING:

If unusual staining is observed or any other deviations from the expected results, please read these instructions carefully, along with the instructions from the detection system. If this does not solve the problem, please contact Gennova Scientific's technical support department or your local distributor.

PRECAUTIONS:

Use only by qualified personnel.

Use proper protective equipment in order to avoid contact with reagents and samples in the eyes, skin, and mucosal tissues. In case of contact with sensitive areas, immediately flush the affected area with water. Avoid microbial contamination of the reagent, as this may produce nonspecific staining results. This antibody contains sodium azide (NaN₃), used as a stabilising agent, which is not considered to be a hazardous material in the concentration used. Concentration of sodium azide in drainage pipes made of lead or copper can cause the formation of highly explosive metallic azides. In order to avoid this, sodium azide must be disposed of along with a large volume of running water. Material safety data sheet (MSDS) for pure sodium azide is available upon request.

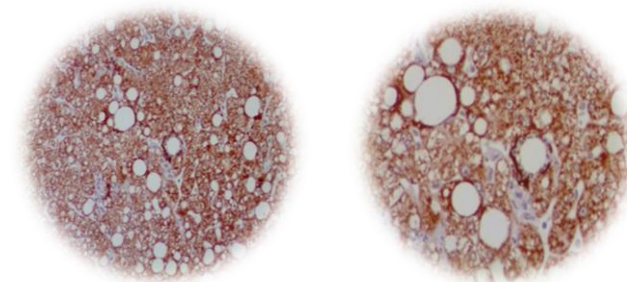
PERFORMANCE CHARACTERISTICS:

Gennova Scientific has performed studies to evaluate the functioning of these antibodies for use with standard detection systems, concluding that the product is both specific and sensitive for the antigen of interest.

BIBLIOGRAPHY:

Minervini M I, et al. (1997) *Mod Pathol*, 10:686-692.
Murakata L A, et al. (2000) *Mod Pathol*, 13:874-881.
Fasano M, et al. (1998) *Mod Pathol*, 11:934-938.
Wennerberg A E, et al. (1993) *Am J Pathol*, 11:1050-1054.
Ramos-Vara, J.A., et al. 2002. Immunohistochemical characterization of canine intestinal epithelial and mesenchymal tumours with a monoclonal antibody to Hepatocyte Paraffin 1 (Hep Par 1). *Histochem. J.* 34: 397-401.
Fan, Z., et al. 2003. Hep Par 1 antibody stain for the differential diagnosis of hepatocellular carcinoma: 676 tumors tested using tissue microarrays and conventional tissue sections. *Mod. Pathol.* 16: 137-144.
Sugiki, T., et al. 2004. Immunohistological evaluation of single small hepatocellular carcinoma with negative staining of monoclonal antibody Hepatocyte Paraffin 1. *J. Surg. Oncol.* 88: 104-107.
Tsung, J.S., et al. 2004. Hepatoid carcinoma of the ovary: characteristics of its immunoreactivity. A case report. *Eur. J. Gynaecol. Oncol.* 25: 745-748.
Lugli, A., et al. 2004. Hepatocyte Paraffin 1 expression in human normal and neoplastic tissues: tissue microarray analysis on 3,940 tissue samples. *Am. J. Clin. Pathol.* 122: 721-727.
Joo, M., et al. 2005. Expression of Ep-CAM in intestinal metaplasia, gastric epithelial dysplasia and gastric adenocarcinoma. *J. Gastroenterol. Hepatol.* 20: 1039-1045.
Mondada, D., et al. 2006. Elevated Hepatocyte Paraffin 1 and nephrilysin expression in hepatocellular carcinoma are correlated with longer survival. *Virchows Arch.* 448: 35-45.
Pang, Y., et al. 2006. The binding of thyroid transcription factor-1 and Hepatocyte Paraffin 1 to mitochondrial proteins in hepatocytes: a molecular and immunoelectron microscopic study. *Am. J. Clin. Pathol.* 125: 722-726.

Amarapurkar, A.D., et al. 2006. Utilization of antihepatocyte clone OCH1E5 (Hep Par 1) in histological evaluation of liver tumors. *Indian J. Pathol. Microbiol.* 49: 341-344.
Nadji M, Morales AR. Immunoperoxidase, part 1: the techniques and its pitfall. *Lab Med* 1983; 14:767-770.
Omata M, Liew CT, Ashcavai M, Peters RI. Nonimmunologic binding of horseradish peroxidase to hepatitis B surface antigen. A possible source of error in immunohistochemistry. *Am J Clin Pathol.* May, 1980;73(5):626-632.



10 ×

20 ×

IHC of Hepatocyte Specific Antigen (clone OCH1E5) on FFPE liver tissue.

Citrate pH 6.5; DAB; Hematoxylin

F01IT04_V3R0411_AP10028_English



Catalog number



Batch code



In Vitro diagnostic medical device



Temperature limitation



Expiration date



Manufacturer



See instruction for use



Gennova Scientific, S.L.
C/ Johann Gutenberg, 4F. Pol. Ind.
El Caamo I • 41300 San Jose
de La Rinconada • Sevilla, SPAIN
Telefono: +34 954 150767
Fax: +34 955 266494

info@gennovalab.com
www.gennova-europe.com