

Anti-Bcl-10 (Clone: 151)
Mouse monoclonal antibody
Reference: AP10038; AP10038C



1 of 2

INTENDED USE AND PRESENTATION:

For *in vitro* diagnostic use.

AP10038, 7 ml. Prediluted antibodies in a synthetic organic linear polymer buffer solution (pH 7.4), with carrier protein and preservative for stabilisation "READY TO USE"

AP10038C, 1 ml. Concentrated antibodies with carrier protein and preservative for stabilisation.

SUMMARY, EXPLANATION AND LIMITATIONS:

Bcl-10 is an adaptor protein with a caspase recruitment domain (CARD) that promotes apoptosis and activates pro-caspase 9 and NF- κ B. Bcl-10 also interacts with other CARD domain containing proteins including CARD9, 10, 11 and 14. Bcl-10 is found to form a complex with MALT1, a protein known to be translocated in MALT lymphomas. Bcl-10 and MALT1 play a critical role in antigen receptor-mediated lymphocyte proliferation and signaling to NF- κ B, which controls the expression of genes critical for cell survival, proliferation, and immune responses. Defects in Bcl-10 have been identified in various types of cancer.

Immunohistochemistry (IHC) is a complex technique in which immunological and histological detection methods are combined. In general, the manipulation and processing of tissues before immunostaining, especially different types of tissue fixation and embedding, as well as the nature of the tissues themselves may cause inconsistent results (Nadji and Morales, 1983). Endogenous pseudoperoxidase and peroxidase activity or endogenous biotin and alkaline phosphatase activity can cause non-specific staining results depending on the detection system used. Tissues that contain Hepatitis B surface antigen (HBsAg) can produce false positives when using HRP detection systems (Omata et al, 1980). Insufficient contrast staining and/or improper mounting of the sample may influence the interpretation of results.

Isotype: IgG1

Immunogen: Recombinant protein of human Bcl-10.

Staining pattern: Cytoplasmic and nuclear.

The interpretation of the stain results is the full responsibility of the user. Any experimental result must be confirmed by a medically established diagnostic product or procedure.

Positive control: Tissue sample from tonsil, MALT lymphoma.

External negative control: Tissue sample homologous to the test sample incubated with an antibody isotype not specific for Bcl-10.

APPLICATIONS:

This antibody is designed for the specific localization of human Bcl-10 using IHC techniques in formalin-fixed, paraffin-embedded tissue sections.

In normal lymphoid tissue, anti-Bcl-10 reacts with germinal center B cells, marginal zone and sporadically and weakly with B lymphocytes of the mantle. In normal cytoplasmic expression is detected in lymphoid organs (spleen, tonsil,

lymph node and thymus), gut lymphoid tissue (appendix) and luminal border of epithelial cells in the breast.

The nuclear expression of Bcl-10 is useful in the diagnosis of MALT lymphoma by showing the translocation t (1; 14) (p22, q32). Unlike MALT lymphomas, B-cell lymphomas of follicular center lymphoma and nodal large B-cell expressed Bcl-10 in the nucleus only at 20 and 10% of cases respectively. Mantle B lymphomas do not express bcl-10 in the nucleus.

PRODUCT COMPOSITION:

Mouse immunoglobulin IgG1, clone 151, purified from the ascites fluid by Protein G chromatography. The preparation contains saline buffer, stabilising and carriers proteins, and sodium azide as a preservative.

METHODS AND PROCEDURE:

Principles of the procedure: The demonstrations of antigens by IHC is a sequential procedure with several steps involving first the application of a specific antibody for the antigen of interest (primary antibody), then a secondary antibody which joins to the first, an enzyme complex, and the addition of a chromogenic substrate. The sample is washed between each step. Enzymatic activation of the chromogenic substrate creates a visible product where the antigen is located. The results are interpreted using a light microscope. The primary antibody can be used both in manual IHC and with automated immunostainers.

Specimen: Paraffin-embedded tissue samples should be used. Western blot techniques are not recommended.

Staining procedure:

Antigen retrieval	HIER EDTA Buffer pH 8.0
Working dilution (only for concentrates)	1:10 – 1:50
Incubation	30 min; RT
Control Tissue	Tonsil, MALT lymphoma

Amplification and development of the immunostaining:

Follow standard procedure and the recommendations given by the manufacturer for the materials used. In the case of using automated immunostainers, use the specified buffers and materials for each instrument.

See our web site at www.gennova-europe.com for detailed protocols ancillary reagents and support products.

REQUIRED MATERIALS BUT NOT SUPPLIED:

All reagents, materials, and laboratory equipment for IHC procedures are not provided with this antibody. This includes adhesive slides and cover slips, positive and negative control tissues, Xylene or adequate substitute, ethanol, distilled H₂O, heat pretreatment equipment (pressure cooker, steamer, microwave), pipettes, Coplin jars, glass jars, moist chamber, histological baths, negative control reagents, counter-staining solution, mounting materials, and microscope.

Buffered solutions for antigen retrieval, enzyme treatments, highly sensitive detection systems, and other auxiliary reagents are available from Genova Scientific.



Catalog number



Batch code



In Vitro diagnostic medical device



Temperature limitation



Expiration date



Manufacturer



See instruction for use



Genova Scientific, S.L.
C/ Johann Gutenberg, 4F. Pol. Ind.
El Canamo I • 41300 San Jose
de La Rinconada • Sevilla, SPAIN
Telfono: +34 954 150767
Fax: +34 955 266494

info@gennovalab.com
www.gennova-europe.com

Anti-Bcl-10 (Clone: 151)
Mouse monoclonal antibody
Reference: AP10038; AP10038C



2 of 2

STORAGE AND STABILITY:

Store at 2-8 °C until the expiration date printed on product label. Do not use after the expiration date. If fresh solutions are required, these must be prepared immediately prior to use, and will be stable for at least one day at room temperature (20-25°C). Unused portion of antibody preparation should be discarded after one day. If the product is stored under different conditions from those stipulated in these technical indications, the new conditions must be verified by the user.

Gennova Scientific guarantees that the product will maintain all of the described characteristics from the production date until the expiration date, as long as the product is stored and used as recommended. No other guarantees are provided. Under no circumstances is Gennova Scientific obliged to cover damages caused by use of this reagent.

TROUBLESHOOTING:

If unusual staining is observed or any other deviations from the expected results, please read these instructions carefully, along with the instructions from the detection system. If this does not solve the problem, please contact Gennova Scientific's technical support department or your local distributor.

PRECAUTIONS:

Use only by qualified personnel.

Use proper protective equipment in order to avoid contact with reagents and samples in the eyes, skin, and mucosal tissues. In case of contact with sensitive areas, immediately flush the affected area with water. Avoid microbial contamination of the reagent, as this may produce nonspecific staining results. This antibody contains sodium azide (NaN₃), used as a stabilising agent, which is not considered to be a hazardous material in the concentration used. Concentration of sodium azide in drainage pipes made of lead or copper can cause the formation of highly explosive metallic azides. In order to avoid this, sodium azide must be disposed of along with a large volume of running water. Material safety data sheet (MSDS) for pure sodium azide is available upon request.

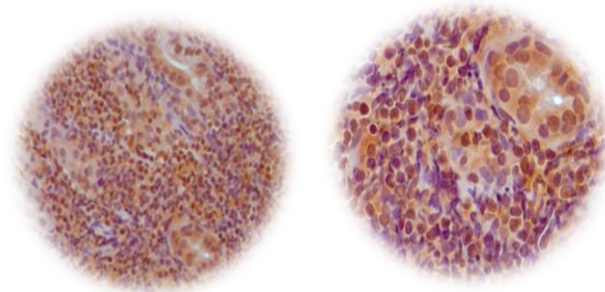
PERFORMANCE CHARACTERISTICS:

Gennova Scientific has performed studies to evaluate the functioning of these antibodies for use with standard detection systems, concluding that the product is both specific and sensitive for the antigen of interest.

BIBLIOGRAPHY:

Willis, T.G., et al, M.J. 1999. Bcl10 is involved in t(1;14)(p22;q32) of MALT B cell lymphoma and mutated in multiple tumor types. Cell 96: 35-45.
Koseki, T., Inohara, N., Chen, S., Carrio, R., Merino, J., Hottiger, M.O., Nabel, G.J. and Nunez, G. 1999. CIPER, a novel NFkB-activating protein containing a caspase recruitment domain with homology to Herpes virus-2 protein E10. J. Biol. Chem. 274: 9955-9961.
Thome, M., et al. 1999. Equine Herpes virus-2 E10 gene product, but not its cellular homologue, activates NFkB transcription factor and c-Jun N-terminal kinase. J. Biol. Chem. 274: 9962-9968.
Yan, M., Lee, J., Schilbach, S., Goddard, A. and Dixit, V. 1999. mE10, a novel caspase recruitment domain-containing proapoptotic molecule. J. Biol. Chem. 274: 10287-10292.

Fakrudin, J.M., Chaganti, R.S. and Murty, VV. 1999. Lack of Bcl10 mutations in germ cell tumors and B cell lymphomas. Cell 97: 683-684.
Apostolou, S., De Rienzo, A., Murthy, S.S., Jhanwar, S.C. and Testa, J.R. 1999. Absence of Bcl10 mutations in human malignant mesothelioma. Cell 97: 684-686.
Ye H, et al. BCL10 expression in normal and neoplastic lymphoid tissue. Nuclear localization in MALT lymphoma. Am J Pathol. 2000;157:1147-1154.
Kawasaki C, et al. Prognostic Value of Bcl 10 Rearrangement In Diffuse Large B-Cell Lymphoma Leukemia & Lymphoma 2002; 43: 823-826.
Merzianu M, et al. Nuclear BCL-10 expression is common in lymphoplasmacytic lymphoma/Waldenstrom macroglobulinemia and does not correlate with p65 NF-kappaB activation. Mod Pathol 2006; 19: 891-898.
Nadji M, Morales AR. Immunoperoxidase, part 1: the techniques and its pitfall. Lab Med 1983; 14:767-770.
Omata M, Liew CT, Ashcavai M, Peters RI. Nonimmunologic binding of horseradish peroxidase to hepatitis B surface antigen. A possible source of error in immunohistochemistry. Am J Clin Pathol. May, 1980;73(5):626-632.



10 ×

20 ×

IHC of Bcl-10 (clone 151) on FFPE MALT tissue.

EDTA pH 8.0, DAB; Hematoxylin

F01IT04_V3R0112_AP10038_English



Catalog number



Batch code



In Vitro diagnostic medical device



Temperature limitation



Expiration date



Manufacturer



See instruction for use



Gennova Scientific, S.L.
C/ Johann Gutenberg, 4F. Pol. Ind.
El Canamo I • 41300 San Jose
de La Rinconada • Sevilla, SPAIN
Telfono: +34 954 150767
Fax: +34 955 266494

info@gennovalab.com
www.gennova-europe.com