

Anti-Bcl 2 α (Clone: 100/D5)

Mouse monoclonal antibody
Reference: AP10039; AP10039C



1 of 2

INTENDED USE AND PRESENTATION:

For *in vitro* diagnostic use.

AP10039, 7 ml. Prediluted antibodies in a synthetic organic linear polymer buffer solution (pH 7.4), with carrier protein and preservative for stabilisation "READY TO USE"

AP10039C, 1 ml. Concentrated antibodies with carrier protein and preservative for stabilisation.

SUMMARY, EXPLANATION AND LIMITATIONS:

The anti-Bcl-2 α recognizes an human oncoprotein of 25-26 kDa that inhibits programmed cell death (apoptosis). Shows no cross reaction with protein Bcl-x or Bax or reacts to Bcl-2 murine or rat. Apoptosis is the physiological process by which all living organisms selectively eliminate cells that no longer need it are damaged or show serious genetic abnormalities. Therefore, defects in the control of this complex process have been linked both to cancer or autoimmune diseases from abnormal cells protected from the same degenerative diseases as multiple premature death of cells that should be safeguarded against it. In most follicular lymphomas, neoplastic germinal centers express high levels of Bcl-2 α protein, whereas the normal or hyperplastic germinal centers are negative.

Immunohistochemistry (IHC) is a complex technique in which immunological and histological detection methods are combined. In general, the manipulation and processing of tissues before immunostaining, especially different types of tissue fixation and embedding, as well as the nature of the tissues themselves may cause inconsistent results (Nadji and Morales, 1983). Endogenous pseudoperoxidase and peroxidase activity or endogenous biotin and alkaline phosphatase activity can cause non-specific staining results depending on the detection system used. Tissues that contain Hepatitis B surface antigen (HBsAg) can produce false positives when using HRP detection systems (Omata et al, 1980). Insufficient contrast staining and/or improper mounting of the sample may influence the interpretation of results.

Isotype: IgG1/kappa

Immunogen: A synthetic peptide, aminoacids 41-54 (GAAPAPGIFSSQPG-Cys) of human Bcl-2 protein.

Staining pattern: Cytoplasm and cell membrane.

The interpretation of the stain results is the full responsibility of the user. Any experimental result must be confirmed by a medically established diagnostic product or procedure.

Positive control: Tissue sample from tonsil or follicular lymphoma.

External negative control: Tissue sample homologous to the test sample incubated with an antibody isotype not specific for Bcl-2 α .

APPLICATIONS:

This antibody is designed for the specific localization of human Bcl-2 α using IHC techniques in formalin-fixed, paraffin-embedded tissue sections.

In normal lymphoid tissue, the anti-Bcl-2 reacts with B lymphocytes small follicular mantle zone and numerous small lymphoid cells within the areas T. The cells are stained in the germinal center corresponding to T helper cells that physiologically colonize it. In the thymus cells are colored some of the core while in the cortex immunostaining is weak or nonexistent. In hematopoietic tissues often stained some cells represent primarily reactive infiltration of leukocytes. For use as an evolutionary marker of malignancy has been reported that the expression or absence is of independent prognostic value in non-Hodgkin lymphoma B large cell carcinomas of the breast and lung tumors among many others.

PRODUCT COMPOSITION:

Mouse immunoglobulin IgG1/kappa, clone 100/D5, purified from ascites fluid by Protein G chromatography. The preparation contains saline buffer, stabilising and carriers proteins, and sodium azide as a preservative.

METHODS AND PROCEDURE:

Principles of the procedure: The demonstrations of antigens by IHC is a sequential procedure with several steps involving first the application of a specific antibody for the antigen of interest (primary antibody), then a secondary antibody which joins to the first, an enzyme complex, and the addition of a chromogenic substrate. The sample is washed between each step. Enzymatic activation of the chromogenic substrate creates a visible product where the antigen is located. The results are interpreted using a light microscope. The primary antibody can be used both in manual IHC and with automated immunostainers.

Specimen: Paraffin-embedded tissue samples should be used. Western blot techniques are not recommended.

Staining procedure:

| | |
|--|-----------------------------|
| Antigen retrieval | HIER Citrate Buffer pH 6.5 |
| Working dilution (only for concentrates) | 1:25 – 1:100 |
| Incubation | 30 min; RT |
| Control Tissue | Tonsil, follicular lymphoma |

Amplification and development of the immunostaining:

Follow standard procedure and the recommendations given by the manufacturer for the materials used. In the case of using automated immunostainers, use the specified buffers and materials for each instrument.

See our web site at www.gennova-europe.com for detailed protocols ancillary reagents and support products.

REQUIRED MATERIALS BUT NOT SUPPLIED:

All reagents, materials, and laboratory equipment for IHC procedures are not provided with this antibody. This includes adhesive slides and cover slips, positive and negative control tissues, Xylene or adequate substitute, ethanol, distilled H₂O, heat pretreatment equipment (pressure cooker, steamer, microwave), pipettes, Coplin jars, glass jars, moist chamber,



Catalog number



Batch code



In Vitro diagnostic medical device



Temperature limitation



Expiration date



Manufacturer



See instruction for use



Gennova Scientific, S.L.
C/ Johann Gutenberg, 4F. Pol. Ind.
El Caamo I • 41300 San Jose
de La Rinconada • Sevilla, SPAIN
Telfono: +34 954 150767
Fax: +34 955 266494

info@gennovalab.com
www.gennova-europe.com

Anti-Bcl 2 α (Clone: 100/D5)

Mouse monoclonal antibody

Reference: AP10039; AP10039C



2 of 2

histological baths, negative control reagents, counter-staining solution, mounting materials, and microscope.

Buffered solutions for antigen retrieval, enzyme treatments, highly sensitive detection systems, and other auxiliary reagents are available from Genova Scientific.

STORAGE AND STABILITY:

Store at 2-8 °C until the expiration date printed on product label. Do not use after the expiration date. If fresh solutions are required, these must be prepared immediately prior to use, and will be stable for at least one day at room temperature (20-25°C). Unused portion of antibody preparation should be discarded after one day. If the product is stored under different conditions from those stipulated in these technical indications, the new conditions must be verified by the user.

Genova Scientific guarantees that the product will maintain all of the described characteristics from the production date until the expiration date, as long as the product is stored and used as recommended. No other guarantees are provided. Under no circumstances is Genova Scientific obliged to cover damages caused by use of this reagent.

TROUBLESHOOTING:

If unusual staining is observed or any other deviations from the expected results, please read these instructions carefully, along with the instructions from the detection system. If this does not solve the problem, please contact Genova Scientific's technical support department or your local distributor.

PRECAUTIONS:

Use only by qualified personnel.

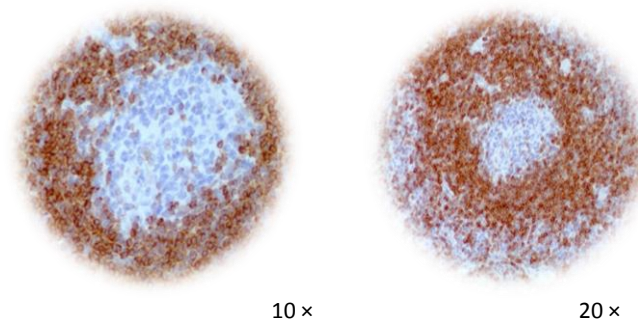
Use proper protective equipment in order to avoid contact with reagents and samples in the eyes, skin, and mucosal tissues. In case of contact with sensitive areas, immediately flush the affected area with water. Avoid microbial contamination of the reagent, as this may produce nonspecific staining results. This antibody contains sodium azide (NaN₃), used as a stabilising agent, which is not considered to be a hazardous material in the concentration used. Concentration of sodium azide in drainage pipes made of lead or copper can cause the formation of highly explosive metallic azides. In order to avoid this, sodium azide must be disposed of along with a large volume of running water. Material safety data sheet (MSDS) for pure sodium azide is available upon request.

PERFORMANCE CHARACTERISTICS:

Genova Scientific has performed studies to evaluate the functioning of these antibodies for use with standard detection systems, concluding that the product is both specific and sensitive for the antigen of interest.

BIBLIOGRAPHY:

- Pezzella F, Tse AG, Cordell JL, Pulford KA, Gatter KC, Mason DY: Expression of the bcl-2 oncogene protein is not specific for the 14;18 chromosomal translocation. *Am J Pathol.* 1990; 137:225-32.
- Miettinen M, Sariolmo-Rikala M, Kovatich AJ: Cell-type- and tumour-type-related patterns of bcl-2 reactivity in mesenchymal cells and soft tissue tumours. *Virchows Arch.* 1998; 433:255-60.
- Adams JM, Cory S: Life-or-death decisions by the Bcl-2 protein family. *Trends Biochem Sci.* 2001; 26:61-6.
- Bouillet P, Strasser A: BH3-only proteins - evolutionarily conserved proapoptotic Bcl-2 family members essential for initiating programmed cell death. *J Cell Sci.* 2002; 115:1567-74.
- Martin B, Paesmans M, Berghmans T, Branle F, Ghisdal L, Mascoux C, Meert AP, Steels E, Vallot F, Verdebout JM, Lafitte JJ, Sculier JP: Role of Bcl-2 as a prognostic factor for survival in lung cancer: a systematic review of the literature with meta-analysis. *Br J Cancer.* 2003; 89:55-64.
- Sohn SK, Jung JT, Kim DH, Kim JG, Kwak EK, Park T, Shin DG, Sohn KR, Lee KB: Prognostic significance of bcl-2, bax, and p53 expression in diffuse large B-cell lymphoma. *Am J Hematol.* 2003; 73:101-7.
- Linjawi A, Kontogianna M, Halwani F, Edwardes M, Meterissian S: Prognostic significance of p53, bcl-2, and Bax expression in early breast cancer. *J Am Coll Surg.* 2004; 198:83-90.
- Kouraklis G, Kakisis J, Theoharis S, Tzonou A, Glinavou A, Raftopoulos J, Karatzas G: Prognostic significance and correlation with survival of bcl-2 and TGF-beta RII in colon cancer. *Dig Dis Sci.* 2003; 48:2284-9.
- Kaur P, Kallakury BS, Sheehan CE, Fisher HA, Kaufman RP Jr, Ross JS: Survivin and Bcl-2 expression in prostatic adenocarcinomas. *Arch Pathol Lab Med.* 2004; 128:39-43.
- Nadji M, Morales AR. Immunoperoxidase, part 1: the techniques and its pitfall. *Lab Med* 1983; 14:767-770.
- Omata M, Liew CT, Ashcavai M, Peters RI. Nonimmunologic binding of horseradish peroxidase to hepatitis B surface antigen. A possible source of error in immunohistochemistry. *Am J Clin Pathol.* May, 1980;73(5):626-632.



IHC of Bcl-2 α (clone 10D/5) on FFPE tonsil tissue.
Citrate pH 6.5; DAB; Hematoxylin

F01IT04_V3R1111_AP10039_English



Catalog number



Batch code



In Vitro diagnostic medical device



Temperature limitation



Expiration date



See instruction for use



Genova Scientific, S.L.
C/ Johann Gutenberg, 4F. Pol. Ind.
El Caamo I • 41300 San Jose
de La Rinconada • Sevilla, SPAIN
Telfono: +34 954 150767
Fax: +34 955 266494

info@genovalab.com
www.genova-europe.com