

Anti-CA 125 (Clone: SPM111)
Mouse monoclonal antibody
Reference: AP10057; AP10057C



1 of 2

INTENDED USE AND PRESENTATION:

For *in vitro* diagnostic use.

AP10057, 7 ml. Prediluted antibodies in a synthetic organic linear polymer buffer solution (pH 7.4), with carrier protein and preservative for stabilisation "READY TO USE"

AP10057C, 1 ml. Concentrated antibodies with carrier protein and preservative for stabilisation.

SUMMARY, EXPLANATION AND LIMITATIONS:

CA125 determinant is present on a mucin-like glycoprotein of high molecular weight. CA125 has been found on frozen sections of amnion and derivatives of coelomic and müllerian epithelium, including pleura, pericardium and peritoneum. In adult tissues, epithelial cells of fallopian tube, endometrium and endocervix, pancreas, colon, gall bladder, stomach, kidney, apocrine sweat gland and mammary gland.

Immunohistochemistry (IHC) is a complex technique in which immunological and histological detection methods are combined. In general, the manipulation and processing of tissues before immunostaining, especially different types of tissue fixation and embedding, as well as the nature of the tissues themselves may cause inconsistent results (Nadji and Morales, 1983). Endogenous pseudoperoxidase and peroxidase activity or endogenous biotin and alkaline phosphatase activity can cause non-specific staining results depending on the detection system used. Tissues that contain Hepatitis B surface antigen (HBsAg) can produce false positives when using HRP detection systems (Omata et al, 1980). Insufficient contrast staining and/or improper mounting of the sample may influence the interpretation of results.

Isotype: IgG1

Immunogen: Ovarian cancer cell line.

Staining pattern: Extracellular membrane-associated.

The interpretation of the stain results is the full responsibility of the user. Any experimental result must be confirmed by a medically established diagnostic product or procedure.

Positive control: Tissue sample from mucinous adenocarcinoma of the ovary, mesothelioma.

External negative control: Tissue sample homologous to the test sample incubated with an antibody isotype not specific for CA 125.

APPLICATIONS:

This antibody is designed for the specific localization of human CA 125 using IHC techniques in formalin-fixed, paraffin-embedded tissue sections.

CA 125 is a tumor marker commonly associated with ovarian carcinomas; identification of this protein in serum is widely used to monitor this type of tumor. This antigen can also be detected in tumor cells in ovarian carcinomas. It also described the expression of CA 125 in other malignancies such as carcinoma of the seminal vesicles and anaplastic. It is important to note that CA 125 is not found exclusively in malignant tumors.

PRODUCT COMPOSITION:

Mouse immunoglobulin IgG1, clone SPM111, obtained from culture supernatant. The preparation contains saline buffer, stabilising and carriers proteins, and sodium azide as a preservative.

METHODS AND PROCEDURE:

Principles of the procedure: The demonstrations of antigens by IHC is a sequential procedure with several steps involving first the application of a specific antibody for the antigen of interest (primary antibody), then a secondary antibody which joins to the first, an enzyme complex, and the addition of a chromogenic substrate. The sample is washed between each step. Enzymatic activation of the chromogenic substrate creates a visible product where the antigen is located. The results are interpreted using a light microscope. The primary antibody can be used both in manual IHC and with automated immunostainers.

Specimen: Paraffin-embedded tissue samples should be used. Western blot techniques are not recommended.

Staining procedure:

Antigen retrieval	HIER Citrate Buffer pH 6.5
Working dilution (only for concentrates)	1:100 – 1:400
Incubation	30 min; RT
Control Tissue	Mucinous adenocarcinoma of the ovary, mesothelioma

Amplification and development of the immunostaining:

Follow standard procedure and the recommendations given by the manufacturer for the materials used. In the case of using automated immunostainers, use the specified buffers and materials for each instrument.

See our web site at www.gennova-europe.com for detailed protocols ancillary reagents and support products.

REQUIRED MATERIALS BUT NOT SUPPLIED:

All reagents, materials, and laboratory equipment for IHC procedures are not provided with this antibody. This includes adhesive slides and cover slips, positive and negative control tissues, Xylene or adequate substitute, ethanol, distilled H₂O, heat pretreatment equipment (pressure cooker, steamer, microwave), pipettes, Coplin jars, glass jars, moist chamber, histological baths, negative control reagents, counter-staining solution, mounting materials, and microscope.

Buffered solutions for antigen retrieval, enzyme treatments, highly sensitive detection systems, and other auxiliary reagents are available from Gennova Scientific.

STORAGE AND STABILITY:

Store at 2-8 °C until the expiration date printed on product label. Do not use after the expiration date. If fresh solutions are required, these must be prepared immediately prior to use, and will be stable for at least one day at room temperature (20-25°C). Unused portion of antibody preparation should be discarded after one day. If the product is stored under different conditions from those stipulated in



Catalog number



Batch code



In Vitro diagnostic medical device



Temperature limitation



Expiration date



Manufacturer



See instruction for use



Gennova Scientific, S.L.
C/ Johann Gutenberg, 4F. Pol. Ind.
El Caano I • 41300 San Jose
de La Rinconada • Sevilla, SPAIN
Telfono: +34 954 150767
Fax: +34 955 266494

info@gennovalab.com
www.gennova-europe.com

Anti-CA 125 (Clone: SPM111)

Mouse monoclonal antibody

Reference: AP10057; AP10057C

CE

IVD



2 of 2

these technical indications, the new conditions must be verified by the user. The validity period of the ready to use products when opened, is the same as the expiration date indicated on the label of intact product.

Gennova Scientific guarantees that the product will maintain all of the described characteristics from the production date until the expiration date, as long as the product is stored and used as recommended. No other guarantees are provided. Under no circumstances is Gennova Scientific obliged to cover damages caused by use of this reagent.

TROUBLESHOOTING:

If unusual staining is observed or any other deviations from the expected results, please read these instructions carefully, along with the instructions from the detection system. If this does not solve the problem, please contact Gennova Scientific's technical support department or your local distributor.

PRECAUTIONS:

Use only by qualified personnel.

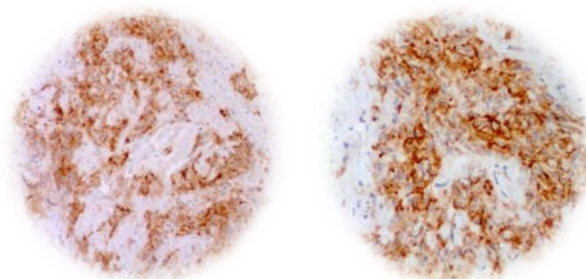
Use proper protective equipment in order to avoid contact with reagents and samples in the eyes, skin, and mucosal tissues. In case of contact with sensitive areas, immediately flush the affected area with water. Avoid microbial contamination of the reagent, as this may produce nonspecific staining results. This antibody contains sodium azide (NaN₃), used as a stabilising agent, which is not considered to be a hazardous material in the concentration used. Concentration of sodium azide in drainage pipes made of lead or copper can cause the formation of highly explosive metallic azides. In order to avoid this, sodium azide must be disposed of along with a large volume of running water. Material safety data sheet (MSDS) for pure sodium azide is available upon request.

PERFORMANCE CHARACTERISTICS:

Gennova Scientific has performed studies to evaluate the functioning of these antibodies for use with standard detection systems, concluding that the product is both specific and sensitive for the antigen of interest.

BIBLIOGRAPHY:

Gabriel M, Obrebowska A and Spaczynski M. Bone marrow involvement in ovarian cancer by immunohistochemical assessment. *Ginekol Pol.* 70 (11):819-823 (1999).
Alagoz T, Buller R E, Berman M, et al.. What is a normal CA125 level? *Gynecologic Oncology.* 53 :93-97 (1994).
Macri C I and Vasilev S A. Highly elevated CA125 and tubo-ovarian abscess mimicking ovarian carcinoma. *Gynecologic and Obstetric Investigation.* 37 :143-144 (1994).
Ohmori T, Okada K, Tabei R, et al.. CA125 producing adenocarcinoma of the seminal vesicle. *Pathology International.* 4 :333-337 (1994).
Rodriguez J M. Elevated CA125 levels in association with Ki-1 anaplastic lymphoma. *Clinical Oncology.* 6 :137 (1994).
Ye C, Ito K, Komatsu Y, et al.. Extremely high levels of CA19-9 and CA125 antigen in benign mucinous ovarian cystadenoma. *Gynecologic Oncology.* 52 :267-271 (1994).
Franchi M, Beretta P, Zanaboni F, et al.. Use of serum CA125 measurement in patients with endometriosis. *Italian Journal of Gynaecology and Obstetrics.* 5 :149-153 (1993).
Nadji M, Morales AR. Immunoperoxidase, part 1: the techniques and its pitfall. *Lab Med* 1983; 14:767-770.
Omata M, Liew CT, Ashcavai M, Peters RI. Nonimmunologic binding of horseradish peroxidase to hepatitis B surface antigen. A possible source of error in immunohistochemistry. *Am J Clin Pathol.* May, 1980; 73(5):626-632.



10 ×

20 ×

IHC of CA 125 (clone SPM111) on FFPE mesothelioma tissue.
Citrate pH 6.5; DAB; Hematoxylin

F01IT04_V3R1111_AP10057_English

REF

Catalog number

LOT

Batch code

IVD

In Vitro diagnostic medical device



Temperature limitation



Expiration date



Manufacturer



See instruction for use



Gennova Scientific, S.L.
C/ Johann Gutenberg, 4F. Pol. Ind.
El Caamo I • 41300 San Jose
de La Rinconada • Sevilla, SPAIN
Telefono: +34 954 150767
Fax: +34 955 266494

info@gennovalab.com
www.gennova-europe.com