

Anti-Calretinin (Clone: SP13)

Rabbit monoclonal antibody

Reference: AP10067; AP10067C



1 of 2

INTENDED USE AND PRESENTATION:

For *in vitro* diagnostic use.

AP10067, 7 ml. Prediluted antibodies in a synthetic organic linear polymer buffer solution (pH 7.4), with carrier protein and preservative for stabilisation "READY TO USE"

AP10067C, 1 ml. Concentrated antibodies with carrier protein and preservative for stabilisation.

SUMMARY, EXPLANATION AND LIMITATIONS:

Calretinin is an intracellular Calcium-binding protein with molecular weight of 31.5 kDa, belonging to the Troponin C protein family.

Calretinin is a frequently utilised marker for the identification of mesotheliomas which are up to about 80 % positive. It is also detectable in some (about 10-15 %) adenocarcinomas of the lung. The percentages given vary hugely across individual surveys.

Squamous cell carcinomas of lung and colon are partially positive. In colon carcinoma the expression of Calretinin increases with decreasing differentiation.

Immunohistochemistry (IHC) is a complex technique in which immunological and histological detection methods are combined. In general, the manipulation and processing of tissues before immunostaining, especially different types of tissue fixation and embedding, as well as the nature of the tissues themselves may cause inconsistent results (Nadji and Morales, 1983). Endogenous pseudoperoxidase and peroxidase activity or endogenous biotin and alkaline phosphatase activity can cause non-specific staining results depending on the detection system used. Tissues that contain Hepatitis B surface antigen (HBsAg) can produce false positives when using HRP detection systems (Omata et al, 1980). Insufficient contrast staining and/or improper mounting of the sample may influence the interpretation of results.

Isotype: IgG

Immunogen: Recombinant full-length mouse calretinin protein.

Staining pattern: Cytoplasmic and nuclear.

The interpretation of the stain results is the full responsibility of the user. Any experimental result must be confirmed by a medically established diagnostic product or procedure.

Positive control: Tissue sample from mesothelioma.

External negative control: Tissue sample homologous to the test sample incubated with an antibody isotype not specific for calretinin.

APPLICATIONS:

This antibody is designed for the specific localization of human calcitonin using IHC techniques in formalin-fixed, paraffin-embedded tissue sections.

The positivity of this antibody in mesothelioma is very high (over 95% sensitivity) and thus most useful is the identification of these neoplasms and their differential diagnosis with other malignant tumors (over 90% specificity if

the specific aim is to differentiate between mesothelioma and metastatic carcinoma within a broad immunohistochemical panel of reference). However, occasional positivity for calretinin has been described in other tumors such as ameloblastomas, tumors of sex cord, cells of stromal ovarian and testicular Sertoli-Leydig.

PRODUCT COMPOSITION:

Immunoglobulin IgG, polyclonal, obtained from purified rabbit serum. The preparation contains saline buffer, stabilising and carriers proteins, and sodium azide as a preservative.

METHODS AND PROCEDURE:

Principles of the procedure: The demonstrations of antigens by IHC is a sequential procedure with several steps involving first the application of a specific antibody for the antigen of interest (primary antibody), then a secondary antibody which joins to the first, an enzyme complex, and the addition of a chromogenic substrate. The sample is washed between each step. Enzymatic activation of the chromogenic substrate creates a visible product where the antigen is located. The results are interpreted using a light microscope. The primary antibody can be used both in manual IHC and with automated immunostainers.

Specimen: Paraffin-embedded tissue samples should be used. The antibody is also useful for immunostaining frozen tissue samples. Western blot techniques are not recommended.

Staining procedure:

Antigen retrieval	HIER Citrate Buffer pH 6.5
Working dilution (only for concentrates)	1:50 – 1:200
Incubation	30 min; RT
Control Tissue	Mesothelioma

Amplification and development of the immunostaining:

Follow standard procedure and the recommendations given by the manufacturer for the materials used. In the case of using automated immunostainers, use the specified buffers and materials for each instrument.

See our web site at www.gennova-europe.com for detailed protocols ancillary reagents and support products.

REQUIRED MATERIALS BUT NOT SUPPLIED:

All reagents, materials, and laboratory equipment for IHC procedures are not provided with this antibody. This includes adhesive slides and cover slips, positive and negative control tissues, Xylene or adequate substitute, ethanol, distilled H₂O, heat pretreatment equipment (pressure cooker, steamer, microwave), pipettes, Coplin jars, glass jars, moist chamber, histological baths, negative control reagents, counter-staining solution, mounting materials, and microscope.

Buffered solutions for antigen retrieval, enzyme treatments, highly sensitive detection systems, and other auxiliary reagents are available from Genova Scientific.



Catalog number



Batch code



In Vitro diagnostic medical device



Temperature limitation



Expiration date



Manufacturer



See instruction for use



Genova Scientific, S.L.
C/ Johann Gutenberg, 4F. Pol. Ind.
El Cañamo I • 41300 San José
de La Rinconada • Sevilla, SPAIN
Teléfono: +34 954 150767
Fax: +34 955 266494

info@gennovalab.com
www.gennova-europe.com

Anti-Calretinin (Clone: SP13)

Rabbit monoclonal antibody

Reference: AP10067; AP10067C



2 of 2

STORAGE AND STABILITY:

Store at 2-8 °C until the expiration date printed on product label. Do not use after the expiration date. If fresh solutions are required, these must be prepared immediately prior to use, and will be stable for at least one day at room temperature (20-25°C). Unused portion of antibody preparation should be discarded after one day. If the product is stored under different conditions from those stipulated in these technical indications, the new conditions must be verified by the user. The validity period of the ready to use products when opened, is the same as the expiration date indicated on the label of intact product.

Gennova Scientific guarantees that the product will maintain all of the described characteristics from the production date until the expiration date, as long as the product is stored and used as recommended. No other guarantees are provided. Under no circumstances is Gennova Scientific obliged to cover damages caused by use of this reagent.

TROUBLESHOOTING:

If unusual staining is observed or any other deviations from the expected results, please read these instructions carefully, along with the instructions from the detection system. If this does not solve the problem, please contact Gennova Scientific's technical support department or your local distributor.

PRECAUTIONS:

Use only by qualified personnel.

Use proper protective equipment in order to avoid contact with reagents and samples in the eyes, skin, and mucosal tissues. In case of contact with sensitive areas, immediately flush the affected area with water. Avoid microbial contamination of the reagent, as this may produce nonspecific staining results. This antibody contains sodium azide (NaN₃), used as a stabilising agent, which is not considered to be a hazardous material in the concentration used. Concentration of sodium azide in drainage pipes made of lead or copper can cause the formation of highly explosive metallic azides. In order to avoid this, sodium azide must be disposed of along with a large volume of running water. Material safety data sheet (MSDS) for pure sodium azide is available upon request.

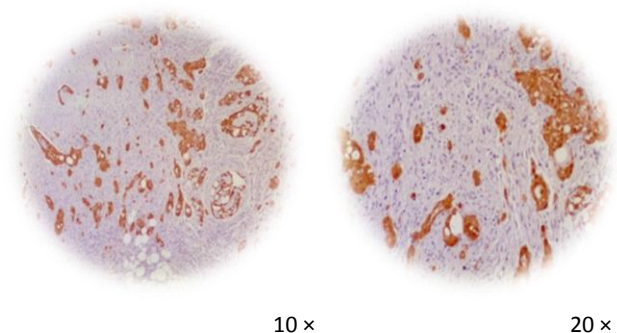
PERFORMANCE CHARACTERISTICS:

Gennova Scientific has performed studies to evaluate the functioning of these antibodies for use with standard detection systems, concluding that the product is both specific and sensitive for the antigen of interest.

BIBLIOGRAPHY:

Rogers J, Khan M, Ellis J: Calretinin and other CaBPs in the nervous system. *Adv Exp Med Biol.* 1990; 269: 195-203.
Schwaller B, et al: Characterisation of a polyclonal antiserum against purified human recombinant calcium binding protein calretinin. *Cell Calcium.* 1993; 14: 639-648.
Vega JA, Haro JJ, Del Valle ME: Immunohistochemistry of human cutaneous Meissner and pacinian corpuscles. *Microsc Res Tech.* 1996; 34:351-61.
Doglioni C, Tos AP, Laurino L, Iuzzolino P, Chiarelli C, Celio MR, Viale G: Calretinin: a novel immunocytochemical marker for mesothelioma. *Am J Surg Pathol.* 1996; 20:1037-46.

Leers MP, Aarts MM, Theunissen PH: E-cadherin and calretinin: a useful combination of immunochemical markers for differentiation between mesothelioma and metastatic adenocarcinoma. *Histopathology.* 1998; 32:209-16
Nagel H, Hemmerlein B, Ruschenburg I, Huppe K, Droese M: The value of anti-calretinin antibody in the differential diagnosis of normal and reactive mesothelia versus metastatic tumors in effusion cytology. *Pathol Res Pract.* 1998; 194:759-64.
Dei Tos AP, Doglioni C: Calretinin: a novel tool for diagnostic immunohistochemistry. *Adv Anat Pathol.* 1998; 5: 61-66.
Ordóñez NG: The immunohistochemical diagnosis of epithelial mesothelioma. *Hum Pathol.* 1999; 30:313-23.
Cappello F, Barnes L: Synovial sarcoma and malignant mesothelioma of the pleura: review, differential diagnosis and possible role of apoptosis. *Pathology.* 2001; 33:142-8.
Cao QJ, Jones JG, Li M: Expression of calretinin in human ovary, testis, and ovarian sex cord-stromal tumors. *Int J Gynecol Pathol.* 2001; 20:346-52.
Ordóñez NG: The immunohistochemical diagnosis of mesothelioma: a comparative study of epithelioid mesothelioma and lung adenocarcinoma. *Am J Surg Pathol.* 2003; 27:1031-51.
Nadji M, Morales AR: Immunoperoxidase, part 1: the techniques and its pitfall. *Lab Med* 1983; 14:767-770.
Omata M, Liew CT, Ashcavai M, Peters RI: Nonimmunologic binding of horseradish peroxidase to hepatitis B surface antigen. A possible source of error in immunohistochemistry. *Am J Clin Pathol.* May, 1980;73(5):626-632.



IHC of Calretinin (Polyclonal) on FFPE mesothelioma tissue.
Citrate pH 6.5; DAB; Hematoxylin

F01IT04_V3R0212_AP10067_English



Catalog number



Batch code



In Vitro diagnostic medical device



Temperature limitation



Expiration date



See instruction for use



Manufacturer



Gennova Scientific, S.L.
C/ Johann Gutenberg, 4F. Pol. Ind.
El Cádizamo I • 41300 San José
de La Rinconada • Sevilla, SPAIN
Teléfono: +34 954 150767
Fax: +34 955 266494

info@gennovalab.com
www.gennova-europe.com