

**Anti-Ki-67 (Clone: SP6)**  
Rabbit monoclonal antibody  
Reference: AP10244; AP10244C



1 of 2

**INTENDED USE AND PRESENTATION:**

For *in vitro* diagnostic use.

**AP10244, 7 ml.** Prediluted antibodies in a synthetic organic linear polymer buffer solution (pH 7.4), with carrier protein and preservative for stabilisation "READY TO USE"

**AP10244C, 1 ml.** Concentrated antibodies with carrier protein and preservative for stabilisation.

**SUMMARY, EXPLANATION AND LIMITATIONS:**

Ki-67 is a nuclear protein which is expressed during every cell cycle except in G<sub>0</sub>. Anti-Ki-67 antibody allows classifying which cells are proliferating or are stationary. So it is possible to study the growing fraction or the mitotic rate in a cell population. It is particularly useful in malign tumors studies and others pathological states quantifying the proliferating cells proportion.

Ki-67 shows a highly specificity for proliferating cells than PCNA (Proliferating Cells Nuclear Antigen), but it has a shorter half-life. Therefore, proliferating cells detection by using Ki-67 is the most widely used immunohistochemical method. Anti-Ki-67 antibody stains lipoblasts and other cells which contains fats, so it can also be used for the liposarcomas detection.

Immunohistochemistry (IHC) is a complex technique in which immunological and histological detection methods are combined. In general, the manipulation and processing of tissues before immunostaining, especially different types of tissue fixation and embedding, as well as the nature of the tissues themselves may cause inconsistent results (Nadji and Morales, 1983). Endogenous pseudoperoxidase and peroxidase activity or endogenous biotin and alkaline phosphatase activity can cause non-specific staining results depending on the detection system used. Tissues that contain Hepatitis B surface antigen (HBsAg) can produce false positives when using HRP detection systems (Omata et al, 1980). Insufficient contrast staining and/or improper mounting of the sample may influence the interpretation of results.

**Isotype:** IgG

**Immunogen:** Synthetic human peptide derived from Ki-67 protein.

**Staining pattern:** Nuclear.

The interpretation of the stain results is the full responsibility of the user. Any experimental result must be confirmed by a medically established diagnostic product or procedure.

**Positive control:** Tissue sample from tonsil, lymph node or breast carcinoma.

**External negative control:** Tissue sample homologous to the test sample incubated with an antibody isotype not specific for Ki-67.

**APPLICATIONS:**

This antibody is designed for the specific localization of human Ki-67 using IHC techniques in formalin-fixed, paraffin-embedded tissue sections. This antibody is useful for

determining the proliferating cell grade. It is also a marker for defining the growing fraction in benign and malign tissues, like prostate, mammary or lymphoid tissue. Therefore, it can play an important role like a prognostic factor of malign tumors.

**PRODUCT COMPOSITION:**

Rabbit immunoglobulin IgG, clone SP6, obtained from culture supernatant. The preparation contains saline buffer, stabilising and carriers proteins, and sodium azide as a preservative.

**METHODS AND PROCEDURE:**

**Principles of the procedure:** The demonstrations of antigens by IHC is a sequential procedure with several steps involving first the application of a specific antibody for the antigen of interest (primary antibody), then a secondary antibody which joins to the first, an enzyme complex, and the addition of a chromogenic substrate. The sample is washed between each step. Enzymatic activation of the chromogenic substrate creates a visible product where the antigen is located. The results are interpreted using a light microscope. The primary antibody can be used both in manual IHC and with automated immunostainers.

**Specimen:** Paraffin-embedded tissue samples should be used. Western blot techniques are not recommended.

**Staining procedure:**

<b>Antigen retrieval</b>	HIER Citrate Buffer pH 6.5
<b>Working dilution</b> (only for concentrates)	1:100 – 1:300
<b>Incubation</b>	30 min; RT
<b>Control Tissue</b>	Tonsil, lymph node or breast carcinoma

**Amplification and development of the immunostaining:**

Follow standard procedure and the recommendations given by the manufacturer for the materials used. In the case of using automated immunostainers, use the specified buffers and materials for each instrument.

See our web site at [www.gennova-europe.com](http://www.gennova-europe.com) for detailed protocols ancillary reagents and support products.

**REQUIRED MATERIALS BUT NOT SUPPLIED:**

All reagents, materials, and laboratory equipment for IHC procedures are not provided with this antibody. This includes adhesive slides and cover slips, positive and negative control tissues, Xylene or adequate substitute, ethanol, distilled H<sub>2</sub>O, heat pretreatment equipment (pressure cooker, steamer, microwave), pipettes, Coplin jars, glass jars, moist chamber, histological baths, negative control reagents, counter-staining solution, mounting materials, and microscope.

Buffered solutions for antigen retrieval, enzyme treatments, highly sensitive detection systems, and other auxiliary reagents are available from Gennova Scientific.

**STORAGE AND STABILITY:**

Store at 2-8 °C until the expiration date printed on product



Catalog number



Batch code



In Vitro diagnostic medical device



Temperature limitation



Expiration date



Manufacturer



See instruction for use



**Gennova Scientific, S.L.**  
C/ Johann Gutenberg, 4F. Pol. Ind.  
El Cafamo I • 41300 San Jose  
de La Rinconada • Sevilla, SPAIN  
Telefono: +34 954 150767  
Fax: +34 955 266494

[info@gennovalab.com](mailto:info@gennovalab.com)  
[www.gennova-europe.com](http://www.gennova-europe.com)

**Anti-Ki-67 (Clone: SP6)**  
Rabbit monoclonal antibody  
Reference: AP10244; AP10244C



2 of 2

label. Do not use after the expiration date. If fresh solutions are required, these must be prepared immediately prior to use, and will be stable for at least one day at room temperature (20-25°C). Unused portion of antibody preparation should be discarded after one day. If the product is stored under different conditions from those stipulated in these technical indications, the new conditions must be verified by the user. The validity period of the ready to use products when opened, is the same as the expiration date indicated on the label of intact product.

Gennova Scientific guarantees that the product will maintain all of the described characteristics from the production date until the expiration date, as long as the product is stored and used as recommended. No other guarantees are provided. Under no circumstances is Gennova Scientific obliged to cover damages caused by use of this reagent.

#### TROUBLESHOOTING:

If unusual staining is observed or any other deviations from the expected results, please read these instructions carefully, along with the instructions from the detection system. If this does not solve the problem, please contact Gennova Scientific's technical support department or your local distributor.

#### PRECAUTIONS:

Use only by qualified personnel.

Use proper protective equipment in order to avoid contact with reagents and samples in the eyes, skin, and mucosal tissues. In case of contact with sensitive areas, immediately flush the affected area with water. Avoid microbial contamination of the reagent, as this may produce nonspecific staining results. This antibody contains sodium azide (NaN<sub>3</sub>), used as a stabilising agent, which is not considered to be a hazardous material in the concentration used. Concentration of sodium azide in drainage pipes made of lead or copper can cause the formation of highly explosive metallic azides. In order to avoid this, sodium azide must be disposed of along with a large volume of running water. Material safety data sheet (MSDS) for pure sodium azide is available upon request.

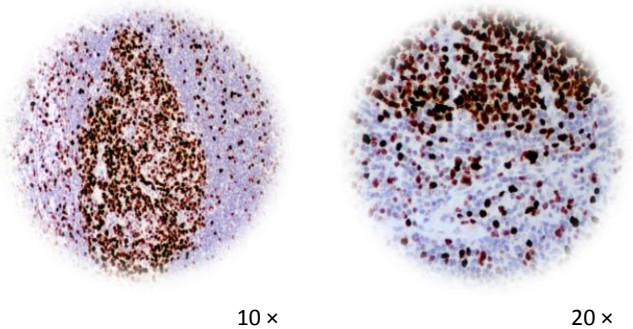
#### PERFORMANCE CHARACTERISTICS:

Gennova Scientific has performed studies to evaluate the functioning of these antibodies for use with standard detection systems, concluding that the product is both specific and sensitive for the antigen of interest.

#### BIBLIOGRAPHY:

Huhtanen RL, Blomqvist CP, Wiklund TA, Böhlting TO, Virolainen MJ, Tukiainen EJ, et al. Comparison of the Ki-67 score and S-phase fraction as prognostic variables in soft-tissue sarcoma. *Br J Cancer* 1999;79:945-51.  
Borre M, Bentzen SM, Nerstrøm B, Overgaard J. Tumor cell proliferation and survival in patients with prostate cancer followed expectantly. *J Urol* 1998;159:1609-14.  
Seshadri R, Leong AS-Y, McCaul K, Fergaira FA, Setlur V, Horsfall DJ. Relationship between p53 gene abnormalities and other tumour characteristics in breast-cancer prognosis [published erratum appears in *Int J Cancer* 1996;69:354]. *Int J Cancer* 1996;69:135-41.  
Gerdes J, Lemke H, Baisch H, Wacker H-H, Schwab U, Stein H. Cell cycle analysis of a cell proliferation-associated human nuclear antigen defined by the monoclonal antibody Ki-67. *J Immunol* 1984;133:1710-5.

Gerdes J, Li L, Schlueter C, Duchrow M, Wohlenberg C, Gerlach C, et al. Immunobiochemical and molecular biologic characterization of the cell proliferation-associated nuclear antigen that is defined by monoclonal antibody Ki-67. *Am J Pathol* 1991;138:867-73.  
Scholzen T, Gerdes J. The Ki-67 protein: from the known and the unknown [review]. *J Cell Physiol* 2000;182:311-22.  
Key G, Kubbutat MH, Gerdes J. Assessment of cell proliferation by means of an enzyme-linked immunosorbent assay based on the detection of the Ki-67 protein. *J Immunol Methods* 1994;177:113-7.  
Nadji M, Morales AR. Immunoperoxidase, part 1: the techniques and its pitfall. *Lab Med* 1983;14:767-770.  
Omata M, Liew CT, Ashcavai M, Peters RI. Nonimmunologic binding of horseradish peroxidase to hepatitis B surface antigen. A possible source of error in immunohistochemistry. *Am J Clin Pathol*. May, 1980;73(5):626-632.



IHC of Ki-67 (clone SP06) on FFPE lymph node tissue.  
Citrate pH 6.5; DAB; Hematoxylin

F01IT04\_V4R0712\_AP10244\_English



Catalog number



Batch code



In Vitro diagnostic medical device



Temperature limitation



Expiration date



Manufacturer



See instruction for use



**Gennova Scientific, S.L.**  
C/ Johann Gutenberg, 4F. Pol. Ind.  
El Cádizamo I • 41300 San José  
de La Rinconada • Sevilla, SPAIN  
Teléfono: +34 954 150767  
Fax: +34 955 266494

[info@gennovalab.com](mailto:info@gennovalab.com)  
[www.gennova-europe.com](http://www.gennova-europe.com)