

Anti-Melan A (Clone: M2-7C10+M2-9E3)

Mouse monoclonal antibody
Reference: AP10267; AP10267C



1 of 2

INTENDED USE AND PRESENTATION:

For *in vitro* diagnostic use.

AP10267, 7 ml. Prediluted antibodies in a synthetic organic linear polymer buffer solution (pH 7.4), with carrier protein and preservative for stabilisation "READY TO USE"

AP10267C, 1 ml. Concentrated antibodies with carrier protein and preservative for stabilisation.

SUMMARY, EXPLANATION AND LIMITATIONS:

This monoclonal antibodies cocktail recognize two different epitopes from a 118 amino acids protein which is fundamentally localized in endoplasmic reticule, Golgi apparatus and melanocyte melanosomes. The protein MART-1 (Melanoma antigen recognized by T cells 1) or Melan-A, after its migration in proteasome and transporting through the TAP system, is specifically recognized by positive CD8 T cells which are generated in the inflammatory infiltrate present in most melanomas. Nowadays it is active working in the possibility of generate induced responses or through vaccines with Melan-A derived peptides for controlling the malignant melanoma, a fact which reaffirms the importance of determining *in vitro* the presence of this marker in each case. The antibodies cocktail reacts with human and horse Melan-A protein, not having been tested in other species. Immunohistochemistry (IHC) is a complex technique in which immunological and histological detection methods are combined. In general, the manipulation and processing of tissues before immunostaining, especially different types of tissue fixation and embedding, as well as the nature of the tissues themselves may cause inconsistent results (Nadji and Morales, 1983). Endogenous pseudoperoxidase and peroxidase activity or endogenous biotin and alkaline phosphatase activity can cause non-specific staining results depending on the detection system used. Tissues that contain Hepatitis B surface antigen (HBsAg) can produce false positives when using HRP detection systems (Omata et al, 1980). Insufficient contrast staining and/or improper mounting of the sample may influence the interpretation of results.

Isotype: IgG2b+IgG2b

Immunogen: Recombinant MART-1 protein.

Staining pattern: Cytoplasmic.

The interpretation of the stain results is the full responsibility of the user. Any experimental result must be confirmed by a medically established diagnostic product or procedure.

Positive control: Tissue sample from human melanoma.

External negative control: Tissue sample homologous to the test sample incubated with an antibody isotype not specific for Mart-1/Melan-A.

APPLICATIONS:

This antibody is designed for the specific localization of human Melan-A using IHC techniques in formalin-fixed, paraffin-embedded tissue sections.

This monoclonal antibodies cocktail recognize either normal

melanocytes or nevus melanocytic cells and melanoma. Therefore it is a cell line marker, not of benignant or malignant process. However, this cocktail against Melan-A is extremely sensitive for detecting melanic tumorous cells, especially in quick immunohistochemical procedures, which currently are used for detecting micrometastasis in sentinel lymph nodes. The product does not react with tumor cells of epithelial, lymphoid, glial, or mesenchymal origin.

PRODUCT COMPOSITION:

Rabbit immunoglobulin IgG2b+IgG2b, clone M2-7C10+M2-9E3, obtained from ascitic fluid purified by protein G chromatography. The preparation contains saline buffer, stabilising and carriers proteins, and sodium azide as a preservative.

METHODS AND PROCEDURE:

Principles of the procedure: The demonstrations of antigens by IHC is a sequential procedure with several steps involving first the application of a specific antibody for the antigen of interest (primary antibody), then a secondary antibody which joins to the first, an enzyme complex, and the addition of a chromogenic substrate. The sample is washed between each step. Enzymatic activation of the chromogenic substrate creates a visible product where the antigen is located. The results are interpreted using a light microscope. The primary antibody can be used both in manual IHC and with automated immunostainers.

Specimen: Paraffin-embedded tissue samples should be used. Western blot techniques are not recommended.

Staining procedure:

Antigen retrieval	HIER Citrate Buffer pH 6.5
Working dilution (only for concentrates)	1:50 – 1:200
Incubation	30 min; RT
Control Tissue	Melanoma

Amplification and development of the immunostaining:

Follow standard procedure and the recommendations given by the manufacturer for the materials used. In the case of using automated immunostainers, use the specified buffers and materials for each instrument.

See our web site at www.gennova-europe.com for detailed protocols ancillary reagents and support products.

REQUIRED MATERIALS BUT NOT SUPPLIED:

All reagents, materials, and laboratory equipment for IHC procedures are not provided with this antibody. This includes adhesive slides and cover slips, positive and negative control tissues, Xylene or adequate substitute, ethanol, distilled H₂O, heat pretreatment equipment (pressure cooker, steamer, microwave), pipettes, Coplin jars, glass jars, moist chamber, histological baths, negative control reagents, counter-staining solution, mounting materials, and microscope.

Buffered solutions for antigen retrieval, enzyme treatments, highly sensitive detection systems, and other auxiliary reagents are available from Genova Scientific.



Catalog number



Batch code



In Vitro diagnostic medical device



Temperature limitation



Expiration date



Manufacturer



See instruction for use



Genova Scientific, S.L.
C/ Johann Gutenberg, 4F. Pol. Ind.
El Cafamo | • 41300 San Jose
de La Rinconada • Sevilla, SPAIN
Telefono: +34 954 150767
Fax: +34 955 266494

info@gennovalab.com
www.gennova-europe.com

Anti-Melan A (Clone: M2-7C10+M2-9E3)

Mouse monoclonal antibody
Reference: AP10267; AP10267C



2 of 2

STORAGE AND STABILITY:

Store at 2-8 °C until the expiration date printed on product label. Do not use after the expiration date. If fresh solutions are required, these must be prepared immediately prior to use, and will be stable for at least one day at room temperature (20-25°C). Unused portion of antibody preparation should be discarded after one day. If the product is stored under different conditions from those stipulated in these technical indications, the new conditions must be verified by the user. The validity period of the ready to use products when opened, is the same as the expiration date indicated on the label of intact product.

Gennova Scientific guarantees that the product will maintain all of the described characteristics from the production date until the expiration date, as long as the product is stored and used as recommended. No other guarantees are provided. Under no circumstances is Gennova Scientific obliged to cover damages caused by use of this reagent.

TROUBLESHOOTING:

If unusual staining is observed or any other deviations from the expected results, please read these instructions carefully, along with the instructions from the detection system. If this does not solve the problem, please contact Gennova Scientific's technical support department or your local distributor.

PRECAUTIONS:

Use only by qualified personnel.

Use proper protective equipment in order to avoid contact with reagents and samples in the eyes, skin, and mucosal tissues. In case of contact with sensitive areas, immediately flush the affected area with water. Avoid microbial contamination of the reagent, as this may produce nonspecific staining results. This antibody contains sodium azide (NaN₃), used as a stabilising agent, which is not considered to be a hazardous material in the concentration used. Concentration of sodium azide in drainage pipes made of lead or copper can cause the formation of highly explosive metallic azides. In order to avoid this, sodium azide must be disposed of along with a large volume of running water. Material safety data sheet (MSDS) for pure sodium azide is available upon request.

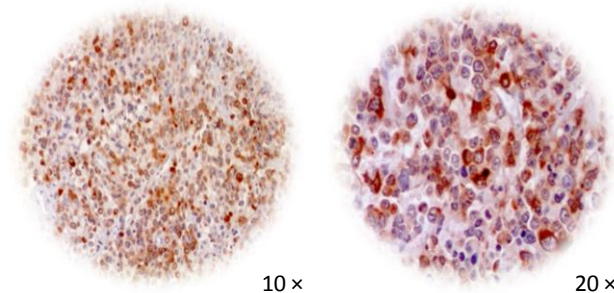
PERFORMANCE CHARACTERISTICS:

Gennova Scientific has performed studies to evaluate the functioning of these antibodies for use with standard detection systems, concluding that the product is both specific and sensitive for the antigen of interest.

BIBLIOGRAPHY:

Kawakami Y, et al: Production of recombinant MART-1 proteins and specific antiMART-1 polyclonal and monoclonal antibodies: use in the characterization of the human melanoma antigen MART-1. *J Immunol Methods*. 1997; 202:13-25.
Busam KJ, et al: Expression of melan-A (MART1) in benign melanocytic nevi and primary cutaneous malignant melanoma. *Am J Surg Pathol*. 1998; 22:976-82.
Hofbauer GF, Kamarashev J, Geertsen R, Boni R, Dummer R: Melan A/MART-1

immunoreactivity in formalin-fixed paraffin-embedded primary and metastatic melanoma: frequency and distribution. *Melanoma Res*. 1998; 8:337-43.
Stewart CJ, Nandini CL, Richmond JA: Value of A103 (melan-A) immunostaining in the differential diagnosis of ovarian sex cord stromal tumours. *J Clin Pathol*. 2000; 53:206-11.
Orchard GE: Comparison of immunohistochemical labelling of melanocyte differentiation antibodies melan-A, tyrosinase and HMB 45 with NKIC3 and S100 protein in the evaluation of benign naevi and malignant melanoma. *Histochem J*. 2000; 32:475-81.
Bergman R, et al: A comparative immunohistochemical study of MART-1 expression in Spitz nevi, ... malignant melanomas. *J Am Acad Dermatol*. 2000; 42:496-500.
Berset M, et al: Expression of Melan-A/MART-1 antigen as a prognostic factor in primary cutaneous melanoma. *Int J Cancer*. 2001; 95:73-7.
Eudy GE, et al: Rapid immunohistochemistry of sentinel lymph nodes for metastatic melanoma. *Hum Pathol*. 2003; 34:797-802.
Sheffield MV et al: Comparison of five antibodies as markers in the diagnosis of melanoma in cytologic preparations. *Am J Clin Pathol*. 2002; 118:930-6.
Nadji M, Morales AR. Immunoperoxidase, part 1: the techniques and its pitfall. *Lab Med* 1983; 14:767-770.
Omata M, Liew CT, Ashcavai M, Peters RI. Nonimmunologic binding of horseradish peroxidase to hepatitis B surface antigen. A possible source of error in immunohistochemistry. *Am J Clin Pathol*. May, 1980;73(5):626-632.



IHC of Melan-A (clone M2-7C10+M2-9E3) on FFPE melanoma tissue.

Citrate pH 6.5; DAB; Hematoxylin

F01IT04_V3R0712_AP10267_English



Catalog number



Batch code



In Vitro diagnostic medical device



Temperature limitation



Expiration date



Manufacturer



See instruction for use



Gennova Scientific, S.L.
C/ Johann Gutenberg, 4F. Pol. Ind.
El Cafamo | • 41300 San Jose
de La Rinconada • Sevilla, SPAIN
Telefono: +34 954 150767
Fax: +34 955 266494

info@gennovalab.com
www.gennova-europe.com