

**Anti-p27<sup>Kip1</sup> (Clone: DCS-72)**  
Mouse monoclonal antibody  
Reference: AP10291; AP10291C



1 of 2

**INTENDED USE AND PRESENTATION:**

For *in vitro* diagnostic use.

**AP10291, 7 ml.** Prediluted antibodies in a synthetic organic linear polymer buffer solution (pH 7.4), with carrier protein and preservative for stabilisation "READY TO USE"

**AP10291C, 1 ml.** Concentrated antibodies with carrier protein and preservative for stabilisation.

**SUMMARY, EXPLANATION AND LIMITATIONS:**

Cell cycle progression is regulated by a series of cyclin-dependent kinases consisting of catalytic subunits, designated Cdk, as well as activating subunits, designated cyclins. Orderly progression through the cell cycle requires the activation and inactivation of different cyclin-Cdk at appropriate times. A series of proteins has recently been described that function as "mitotic inhibitors." These include p21, the levels of which are elevated upon DNA damage in G1 in a p53-dependent manner; p16; and a more recently described p16-related inhibitor designated p15. A p21-related protein, p27, has been described as a negative regulator of G1 progression and speculated to function as a possible mediator of G1 arrest. p27 interacts strongly with D-type cyclins and Cdk4 *in vitro* and, to a lesser extent, with cyclin E and Cdk2.

Immunohistochemistry (IHC) is a complex technique in which immunological and histological detection methods are combined. In general, the manipulation and processing of tissues before immunostaining, especially different types of tissue fixation and embedding, as well as the nature of the tissues themselves may cause inconsistent results (Nadji and Morales, 1983). Endogenous pseudoperoxidase and peroxidase activity or endogenous biotin and alkaline phosphatase activity can cause non-specific staining results depending on the detection system used. Tissues that contain Hepatitis B surface antigen (HBsAg) can produce false positives when using HRP detection systems (Omata et al, 1980). Insufficient contrast staining and/or improper mounting of the sample may influence the interpretation of results.

**Isotype:** IgG1

**Immunogen:** BALB/C mice were injected with mouse recombinant p27<sup>Kip1</sup> protein.

**Staining pattern:** Nuclear.

The interpretation of the stain results is the full responsibility of the user. Any experimental result must be confirmed by a medically established diagnostic product or procedure.

**Positive control:** Tissue sample from prostate carcinoma.

**External negative control:** Tissue sample homologous to the test sample incubated with an antibody isotype not specific for p27<sup>Kip1</sup>.

**APPLICATIONS:**

This antibody is designed for the specific localization of human p27<sup>Kip1</sup> using IHC techniques in formalin-fixed,

paraffin-embedded tissue sections.

**PRODUCT COMPOSITION:**

Mouse immunoglobulin IgG1, clone DCS-72, obtained from the ascites fluid and purified. The preparation contains saline buffer, stabilising and carriers proteins, and sodium azide as a preservative.

**METHODS AND PROCEDURE:**

**Principles of the procedure:** The demonstrations of antigens by IHC is a sequential procedure with several steps involving first the application of a specific antibody for the antigen of interest (primary antibody), then a secondary antibody which joins to the first, an enzyme complex, and the addition of a chromogenic substrate. The sample is washed between each step. Enzymatic activation of the chromogenic substrate creates a visible product where the antigen is located. The results are interpreted using a light microscope. The primary antibody can be used both in manual IHC and with automated immunostainers.

**Specimen:** Paraffin-embedded tissue samples should be used. Western blot techniques are not recommended.

**Staining procedure:**

<b>Antigen retrieval</b>	HIER EDTA Buffer pH 8.0
<b>Working dilution</b> (only for concentrates)	1:25 – 1:100
<b>Incubation</b>	30 min; RT
<b>Control Tissue</b>	Prostate carcinoma

**Amplification and development of the immunostaining:** follow standard procedure and the recommendations given by the manufacturer for the materials used. In the case of using automated immunostainers, use the specified buffers and materials for each instrument.

See our web site at [www.gennova-europe.com](http://www.gennova-europe.com) for detailed protocols ancillary reagents and support products.

**REQUIRED MATERIALS BUT NOT SUPPLIED:**

All reagents, materials, and laboratory equipment for IHC procedures are not provided with this antibody. This includes adhesive slides and cover slips, positive and negative control tissues, Xylene or adequate substitute, ethanol, distilled H<sub>2</sub>O, heat pretreatment equipment (pressure cooker, steamer, microwave), pipettes, Coplin jars, glass jars, moist chamber, histological baths, negative control reagents, counter-staining solution, mounting materials, and microscope.

Buffered solutions for antigen retrieval, enzyme treatments, highly sensitive detection systems, and other auxiliary reagents are available from Genova Scientific.

**STORAGE AND STABILITY:**

Store at 2-8 °C until the expiration date printed on product label. Do not use after the expiration date. If fresh solutions are required, these must be prepared immediately prior to use, and will be stable for at least one day at room



Catalog number



Batch code



In Vitro diagnostic medical device



Temperature limitation



Expiration date



Manufacturer



See instruction for use



**Genova Scientific, S.L.**  
C/ Johann Gutenberg, 4F. Pol. Ind.  
El Cafamo I • 41300 San Jose  
de La Rinconada • Sevilla, SPAIN  
Telefono: +34 954 150767  
Fax: +34 955 266494

[info@gennovalab.com](mailto:info@gennovalab.com)  
[www.gennova-europe.com](http://www.gennova-europe.com)

**Anti-p27<sup>Kip1</sup> (Clone: DCS-72)**  
Mouse monoclonal antibody  
Reference: AP10291; AP10291C



2 of 2

temperature (20-25°C). Unused portion of antibody preparation should be discarded after one day. If the product is stored under different conditions from those stipulated in these technical indications, the new conditions must be verified by the user.

Gennova Scientific guarantees that the product will maintain all of the described characteristics from the production date until the expiration date, as long as the product is stored and used as recommended. No other guarantees are provided. Under no circumstances is Gennova Scientific obliged to cover damages caused by use of this reagent.

**TROUBLESHOOTING:**

If unusual staining is observed or any other deviations from the expected results, please read these instructions carefully, along with the instructions from the detection system. If this does not solve the problem, please contact Gennova Scientific's technical support department or your local distributor.

**PRECAUTIONS:**

Use only by qualified personnel.

Use proper protective equipment in order to avoid contact with reagents and samples in the eyes, skin, and mucosal tissues. In case of contact with sensitive areas, immediately flush the affected area with water. Avoid microbial contamination of the reagent, as this may produce nonspecific staining results. This antibody contains sodium azide (NaN<sub>3</sub>), used as a stabilising agent, which is not considered to be a hazardous material in the concentration used. Concentration of sodium azide in drainage pipes made of lead or copper can cause the formation of highly explosive metallic azides. In order to avoid this, sodium azide must be disposed of along with a large volume of running water. Material safety data sheet (MSDS) for pure sodium azide is available upon request.

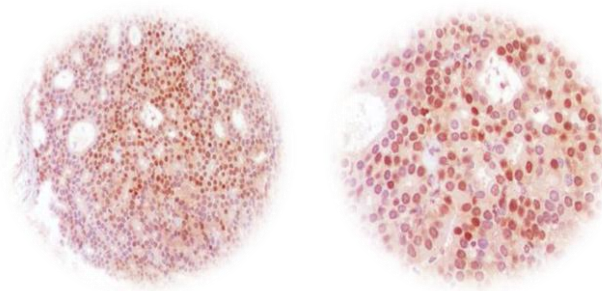
**PERFORMANCE CHARACTERISTICS:**

Gennova Scientific has performed studies to evaluate the functioning of these antibodies for use with standard detection systems, concluding that the product is both specific and sensitive for the antigen of interest.

**BIBLIOGRAPHY:**

Sherr, C.J. 1993. Mammalian G1 cyclins. Cell 73: 1059-1065.  
El-Deiry, W.S., et al. 1993. WAF1, a potential mediator of p53 tumor suppression. Cell 75: 817-825.  
Xiong, Y., et al. 1993. p21 is a universal inhibitor of cyclin kinases. Nature 366: 701-704.  
Serrano, M., et al. 1993. A new regulatory motif in cell cycle control causing specific inhibition of cyclin D/Cdk4. Nature 366: 704-707.  
Hannon, G.J., et al. 1994. p15INK4B is a potential effector of TGFβ-induced cell cycle arrest. Nature 371: 257-260.  
Polyak, K., et al. 1994. p27KIP1, a cyclin-Cdk inhibitor, links transforming growth factor β and contact inhibition to cell cycle arrest. Genes Dev. 8: 9-22.  
Hengst, L., et al. 1994. A cell cycle-regulated inhibitor of cyclin-dependent kinases. Proc. Natl. Acad. Sci. USA 91: 5291-5295.  
Polyak, K., et al. 1994. Cloning of p27KIP1, a cyclin-dependent kinase inhibitor and a potential mediator of extracellular antimitogenic signals. Cell 78: 59-66.  
Nadji M, Morales AR. Immunoperoxidase, part 1: the techniques and its pitfall. Lab Med 1983; 14:767-770.  
Omata M, Liew CT, Ashcavai M, Peters RL. Nonimmunologic binding of horseradish

peroxidase to hepatitis B surface antigen. A possible source of error in immunohistochemistry. Am J Clin Pathol. May, 1980;73(5):626-632.



10 ×

20 ×

IHC of p27<sup>Kip1</sup> (clone DCS-72) on FFPE prostate carcinoma tissue.

EDTA pH 8.0; DAB; Hematoxylin

F01IT04\_V2R1012\_AP10291\_English



Catalog number



Batch code



In Vitro diagnostic medical device



Temperature limitation



Expiration date



Manufacturer



See instruction for use



**Gennova Scientific, S.L.**  
C/ Johann Gutenberg, 4F. Pol. Ind.  
El Cádizamo I • 41300 San José  
de La Rinconada • Sevilla, SPAIN  
Teléfono: +34 954 150767  
Fax: +34 955 266494

[info@gennovalab.com](mailto:info@gennovalab.com)  
[www.gennova-europe.com](http://www.gennova-europe.com)