

Anti- LYVE-1
Rabbit polyclonal antibody
Reference: AP10410; AP10410C



1 of 2

INTENDED USE AND PRESENTATION:

For *in vitro* diagnostic use.

AP10410, 7 ml. Prediluted antibodies in a synthetic organic linear polymer buffer solution (pH 7.4), with carrier protein and preservative for stabilisation "READY TO USE"

AP10410C, 1 ml. Concentrated antibodies with carrier protein and preservative for stabilisation.

SUMMARY, EXPLANATION AND LIMITATIONS:

LYVE-1 (Lymphatic Vessel Endothelial Hyaluronan Receptor, HA Receptor) is the first known hyaluronic acid receptor specific for lymphatic vessels (Banerji et al. 1999). Specific staining of endothelium of lymphatic vessels with anti-LYVE-1 antibody can make it easier to detect lymphatic invasion. Anti-LYVE-1 antibody stains positive in the cytoplasm of endothelial cells of lymphatic vessels. It does not react with endothelial cells of blood vessels. Hence, it is extremely useful in distinguishing lymphatic vessels from blood vessels and in identification of retraction artefacts in tissue sections. Immunohistochemistry (IHC) is a complex technique in which immunological and histological detection methods are combined. In general, the manipulation and processing of tissues before immunostaining, especially different types of tissue fixation and embedding, as well as the nature of the tissues themselves may cause inconsistent results (Nadji and Morales, 1983). Endogenous pseudoperoxidase and peroxidase activity or endogenous biotin and alkaline phosphatase activity can cause non-specific staining results depending on the detection system used. Tissues that contain Hepatitis B surface antigen (HBsAg) can produce false positives when using HRP detection systems (Omata et al, 1980). Insufficient contrast staining and/or improper mounting of the sample may influence the interpretation of results.

Isotype: IgG

Immunogen: In insect cells expressed recombinant peptide according to the amino acid residues 24 (Ser) to 232 (Gly) of soluble human LYVE-1, C-terminally bound to a tag of 6 x His.

Staining pattern: Cytoplasmic.

The interpretation of the stain results is the full responsibility of the user. Any experimental result must be confirmed by a medically established diagnostic product or procedure.

Positive control: Tissue sample from appendix, colon.

External negative control: Tissue sample homologous to the test sample incubated with an antibody isotype not specific for LYVE-1.

APPLICATIONS:

This antibody is designed for the specific localization of human LYVE-1 using IHC techniques in formalin-fixed, paraffin-embedded tissue sections.

This antibody stains positively the cytoplasm in endothelial cells of lymphatic vessels. Does not react with endothelial cells of blood vessels, and is therefore extremely useful in

distinguishing lymphatic and blood vessels in the identification of retraction artifact in tissue sections.

PRODUCT COMPOSITION:

Rabbit immunoglobulin IgG, polyclonal, obtained from culture supernatant. The preparation contains saline buffer, stabilising and carriers proteins, and sodium azide as a preservative.

METHODS AND PROCEDURE:

Principles of the procedure: The demonstrations of antigens by IHC is a sequential procedure with several steps involving first the application of a specific antibody for the antigen of interest (primary antibody), then a secondary antibody which joins to the first, an enzyme complex, and the addition of a chromogenic substrate. The sample is washed between each step. Enzymatic activation of the chromogenic substrate creates a visible product where the antigen is located. The results are interpreted using a light microscope. The primary antibody can be used both in manual IHC and with automated immunostainers.

Specimen: Paraffin-embedded tissue samples should be used. The antibody is also useful for immunostaining frozen tissue samples. Western blot techniques are not recommended.

Staining procedure:

Antigen retrieval	HIER Citrate Buffer pH 6.5
Working dilution (only for concentrates)	1:10 – 1:50
Incubation	30 min; RT
Control Tissue	Appendix, colon

Amplification and development of the immunostaining:

Follow standard procedure and the recommendations given by the manufacturer for the materials used. In the case of using automated immunostainers, use the specified buffers and materials for each instrument.

See our web site at www.gennova-europe.com for detailed protocols ancillary reagents and support products.

REQUIRED MATERIALS BUT NOT SUPPLIED:

All reagents, materials, and laboratory equipment for IHC procedures are not provided with this antibody. This includes adhesive slides and cover slips, positive and negative control tissues, Xylene or adequate substitute, ethanol, distilled H₂O, heat pretreatment equipment (pressure cooker, steamer, microwave), pipettes, Coplin jars, glass jars, moist chamber, histological baths, negative control reagents, counter-staining solution, mounting materials, and microscope.

Buffered solutions for antigen retrieval, enzyme treatments, highly sensitive detection systems, and other auxiliary reagents are available from Genova Scientific.

STORAGE AND STABILITY:

Store at 2-8 °C until the expiration date printed on product label. Do not use after the expiration date. If fresh solutions are required, these must be prepared immediately prior to use, and will be stable for at least one day at room

REF Catalog number

LOT Batch code

IVD In Vitro diagnostic medical device

Temperature limitation

Expiration date

Manufacturer

See instruction for use



Genova Scientific, S.L.
C/ Johann Gutenberg, 4F. Pol. Ind.
El Cañamo I • 41300 San José
de La Rinconada • Sevilla, SPAIN
Teléfono: +34 954 150767
Fax: +34 955 266494

info@gennovalab.com
www.gennova-europe.com

Anti- LYVE-1
Rabbit polyclonal antibody
Reference: AP10410; AP10410C



2 of 2

temperature (20-25°C). Unused portion of antibody preparation should be discarded after one day. If the product is stored under different conditions from those stipulated in these technical indications, the new conditions must be verified by the user. The validity period of the ready to use products when opened, is the same as the expiration date indicated on the label of intact product.

Gennova Scientific guarantees that the product will maintain all of the described characteristics from the production date until the expiration date, as long as the product is stored and used as recommended. No other guarantees are provided. Under no circumstances is Gennova Scientific obliged to cover damages caused by use of this reagent.

TROUBLESHOOTING:

If unusual staining is observed or any other deviations from the expected results, please read these instructions carefully, along with the instructions from the detection system. If this does not solve the problem, please contact Gennova Scientific's technical support department or your local distributor.

PRECAUTIONS:

Use only by qualified personnel.
Use proper protective equipment in order to avoid contact with reagents and samples in the eyes, skin, and mucosal tissues. In case of contact with sensitive areas, immediately flush the affected area with water. Avoid microbial contamination of the reagent, as this may produce nonspecific staining results. This antibody contains sodium azide (NaN₃), used as a stabilising agent, which is not considered to be a hazardous material in the concentration used. Concentration of sodium azide in drainage pipes made of lead or copper can cause the formation of highly explosive metallic azides. In order to avoid this, sodium azide must be disposed of along with a large volume of running water. Material safety data sheet (MSDS) for pure sodium azide is available upon request.

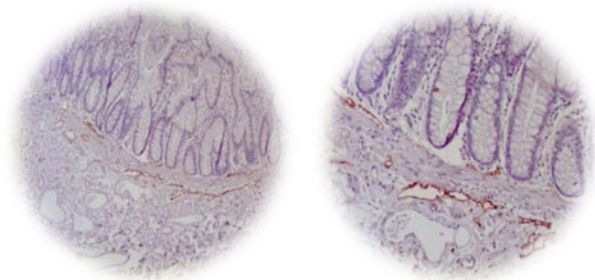
PERFORMANCE CHARACTERISTICS:

Gennova Scientific has performed studies to evaluate the functioning of these antibodies for use with standard detection systems, concluding that the product is both specific and sensitive for the antigen of interest.

BIBLIOGRAPHY:

Banerji, S., et al. 1999. LYVE-1, a new homolog of the CD44 glycoprotein, is a lymph-specific receptor for hyaluronan. *J. Cell Biol.* 144: 789-801.
Jackson, D.G., et al. 2001. LYVE-1, the lymphatic system and tumor lymphangiogenesis. *Trends Immunol.* 22: 317-321.
Cunnick, G.H., et al. 2001. Lymphangiogenesis quantification using quantitative PCR and breast cancer as a model. *Biochem. Biophys. Res. Commun.* 288: 1043-1046.
Mouta-Carreira, C., et al. 2001. LYVE-1 is not restricted to the lymph vessels: expression in normal liver blood sinusoids and downregulation in human liver cancer and cirrhosis. *Cancer Res.* 61: 8079-8084.
Zhang, S.Q., et al. 2009. Clinical implications of increased lymph vessel density in the lymphatic metastasis of early-stage invasive cervical carcinoma: a clinical immunohistochemical method study. *BMC Cancer* 9: 64.
Luong, M.X., et al. 2009. Lack of lymphatic vessel phenotype in LYVE-1/ CD44 double knockout mice. *J. Cell. Physiol.* 219: 430-437.
Kubota, Y., et al. 2009. M-CSF inhibition selectively targets pathological angiogenesis and lymphangiogenesis. *J. Exp. Med.* 206: 1089-1102.

Nadji M, Morales AR. Immunoperoxidase, part 1: the techniques and its pitfall. *Lab Med* 1983; 14:767-770.
Omata M, Liew CT, Ashcavai M, Peters RI. Nonimmunologic binding of horseradish peroxidase to hepatitis B surface antigen. A possible source of error in immunohistochemistry. *Am J Clin Pathol.* May, 1980;73(5):626-632.



10 ×

20 ×

IHC of LYVE-1 (Polyclonal) on FFPE colon tissue.
Citrate pH 6.5; DAB; Hematoxylin

F01IT04_V1R0212_AP10410_English

REF	Catalog number	LOT	Batch code	IVD	In Vitro diagnostic medical device
	Temperature limitation		Expiration date		
	Manufacturer		See instruction for use		

Gennova Scientific, S.L.
C/ Johann Gutenberg, 4F. Pol. Ind.
El Cádizamo I • 41300 San José
de La Rinconada • Sevilla, SPAIN
Teléfono: +34 954 150767
Fax: +34 955 266494

info@gennovalab.com
www.gennova-europe.com